



**To: All Vendors Bidding on The College of New Jersey
Library Spirit Shop Renovation**

**From: Lauren Manning
Finance & Business Services**

Date: January 20, 2026

ADDENDUM NO. 2

ISSUE DATE: January 20, 2026

REFERENCE: The College of New Jersey
Library Spirit Shop Renovation
Bid No. AB260013

Date of Original Bidding Documents: December 23, 2025

INTENT: This Addendum forms a part of the Contract Documents and modifies the original Bidding Documents and Prior Addenda if any, as identified above.

REVISED BID OPENING DATE:

The College of New Jersey will receive sealed bids for the Library Spirit Shop Renovation until 2:00 P.M. on January 29, 2026 at The College's Office of Finance and Business Services, Administrative Services Building, Second Floor, Room 201, Route 31 (Pennington Road), Ewing Township, New Jersey.

VENDOR QUESTIONS:

Question 1. Lighting A1 & P1 are not shown on Electrical, as per note on A101 Legend. Please assist with the following:

- Who is to include furnishing for these? Appears to be (15) A1 & (2) P1 Pendants
- Is installation by EC? If so, can make/model be provided for details on installation?
- How are these controlled?

Response: The future fixtures are to be supplied by Barnes and Nobles and installed under the scope of a future project. A junction box is to be installed by the Electrical Contractor for this project, in the areas of the future fixtures, noted on the electrical drawings (E301). Future fixtures will be controlled the same as other lights in the vicinity.

REVISIONS TO DRAWINGS:

Architectural

- A101 Construction Plan & RCP

Electrical

- E301 Electrical Lighting Plan

ATTACHMENTS:

1. DRAWINGS
 - o A101
 - o E301
2. NARRATIVE FOR PREVIOUS ADDENDUM NO. 1
3. NARRATIVE FOR ADDENDUM NO. 2
4. REVISED MILESTONE SCHEDULE

END OF ADDENDUM NO. 2

THE LINE SHOWN AT LEFT IS EXACTLY ONE INCH LONG AT THIS SHEET'S ORIGINAL PAGE SIZE

RCP GENERAL NOTES

- NOT ALL MEP/FIT, SECURITY, & STRUCTURAL COMPONENTS ARE SHOWN. REFER TO MEP/FIT DRAWINGS FOR MORE INFORMATION.
- WHERE SHOWN, MECHANICAL AIR DEVICES, ELECTRICAL DEVICES, AND SPRINKLER HEADS ARE INCLUDED AS EXAMPLES OF DESIGN INTENT. SEE FOR MEP/FIT DRAWINGS FULL SCOPE OF WORK. MEP COMPONENTS REQUIRING ACCESS TO BE LOCATED AT ACCESSIBLE CEILINGS WHERE POSSIBLE. PROVIDE ACCESS PANELS AS REQUIRED AT LOCATIONS OF INACCESSIBLE CEILINGS. COORDINATE WITH ARCHITECT.
- AVOID TILE SLIVERS LESS THAN 4".
- ALL SUSPENDED ACOUSTIC PANEL SHALL BE CENTERED IN ROOM, U.N.O.
- CENTER MECH AIR DEVICES, ELECTRICAL DEVICES, SPRINKLER HEADS, AND OTHER CEILING-MOUNTED DEVICES IN ACOUSTIC PANEL, U.N.O.
- SEE ELECTRICAL DRAWINGS FOR DETAILED LIGHTING FIXTURE SCHEDULE.
- SEE ELECTRICAL DRAWINGS FOR ADDITIONAL EMERGENCY LIGHTING INFORMATION.
- ALL LIGHTS TO BE CENTERED IN ACOUSTIC PANEL, U.N.O.

RCP LEGEND

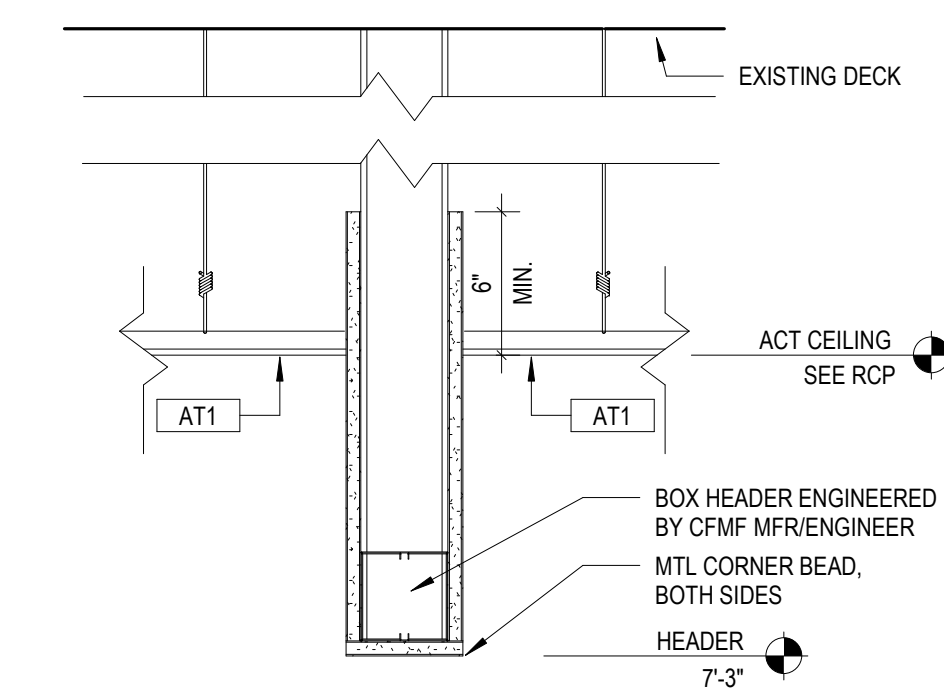
CEILING LEGEND	
	EXISTING GWB TO REMAIN
	GWB, PAINTED - REFER TO RCP FOR COLORS
	EXISTING ACT TILE AND GRID TO REMAIN
	2X4 ACT (REFER TO FINISH SCHEDULE)
	PAINT COLOR

LIGHTING LEGEND

A1	ACT MOUNTED LINEAR WASH TRACK LIGHTING FIXTURES TO BE INSTALLED IN FUTURE SCOPE OF WORK, PROVIDED BY BARNES & NOBLES - SEE ELECTRICAL
A24	COLUMBIA LIGHTING: 2X4 BACKLIT FLAT PANEL CB724-A-LSCS-EDD
A22	COLUMBIA LIGHTING: 2X2 BACKLIT FLAT PANEL CB722-A-LSCS-EDD
B08	HE WILLIAMS: 3" WIDE RECESSED LINEAR - 8FT LONG LRX3X-8-L8835-S-DMA-DIM-UNV
B12	HE WILLIAMS: 3" WIDE RECESSED LINEAR - 12FT LONG LRX3X-12-L8835-S-DMA-DIM-UNV
B16	HE WILLIAMS: 3" WIDE RECESSED LINEAR - 16FT LONG LRX3X-16-L8835-S-DMA-DIM-UNV
C	SLG: 6" RECESSED SQUARE DOWNLIGHT DR5 6S LS15 G4 9FK
E1	EXISTING RECESSED 1X4 TO REMAIN
E2	EXISTING LINEAR PENDANT TO REMAIN
E3	EXISTING PENDANT TO REMAIN
E4	EXISTING RECESSED CAN LIGHT TO REMAIN
E5	EXISTING SOFFIT-MOUNTED COVE LIGHT TO REMAIN
X1	EXIT SIGN
P1	PENDANT LIGHT SUSPENDED FROM ACT. FIXTURES TO BE INSTALLED IN FUTURE SCOPE OF WORK, PROVIDED BY BARNES & NOBLES - SEE ELECTRICAL

RCP PLAN KEYNOTES

KEY	NOTE
R1	EXISTING OVERHEAD COILING GRILLE TO REMAIN.
R2	EXISTING SOFFIT TO REMAIN.
R3	NEW GWB SOFFIT.



4
A101
CEILING DETAIL @ HEADER
1 1/2" = 1'-0"

CONSTRUCTION PLAN KEYNOTES

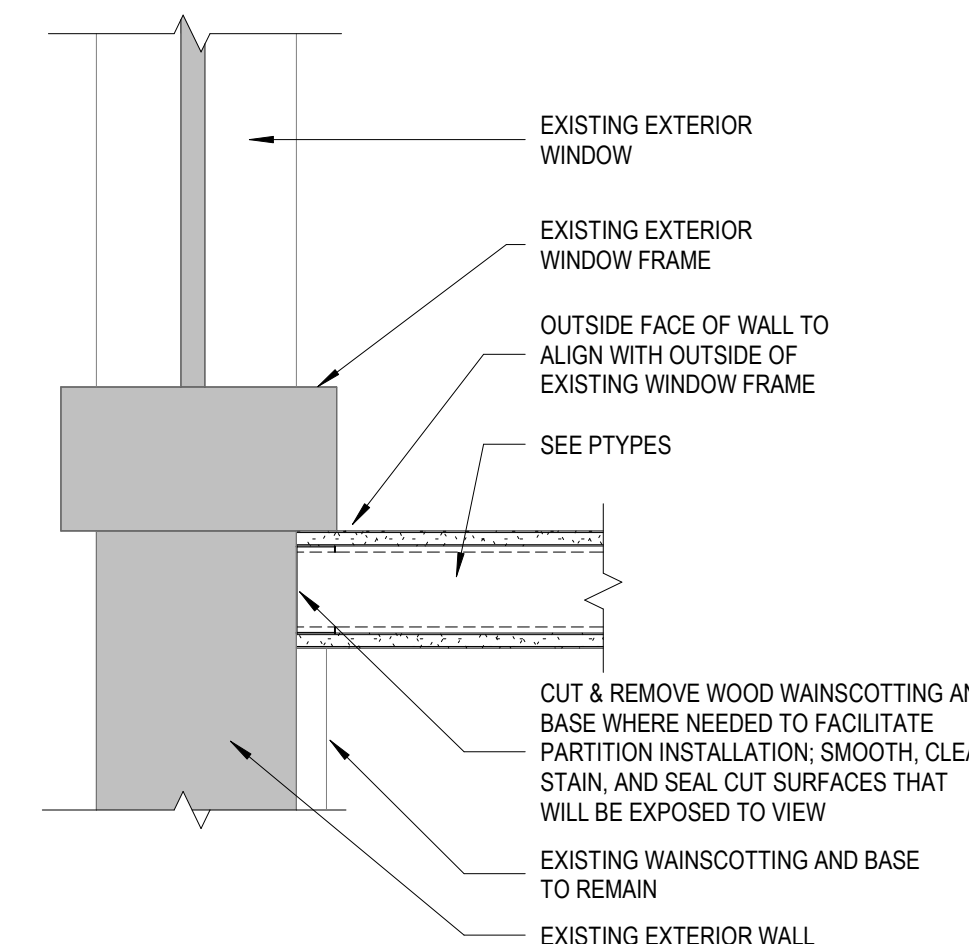
KEY	NOTE
C1	REUSE DEMOLISHED COLUMN MILLWORK OR REPLACE IN KIND TO COVER GAP AT EXISTING OVERHEAD COILING GRILLE.
C2	CUT & REMOVE WOOD MOLDING & TRIM WHERE NEEDED TO FACILITATE PARTITION INSTALLATION; SMOOTH, CLEAN, STAIN, AND SEAL CUT SURFACES THAT WILL BE EXPOSED TO VIEW.
C3	PROVIDE METAL STRAPPING THIS SIDE OF WALL. REFER TO PTYPES FOR ADDITIONAL INFORMATION.

PLAN GENERAL NOTES

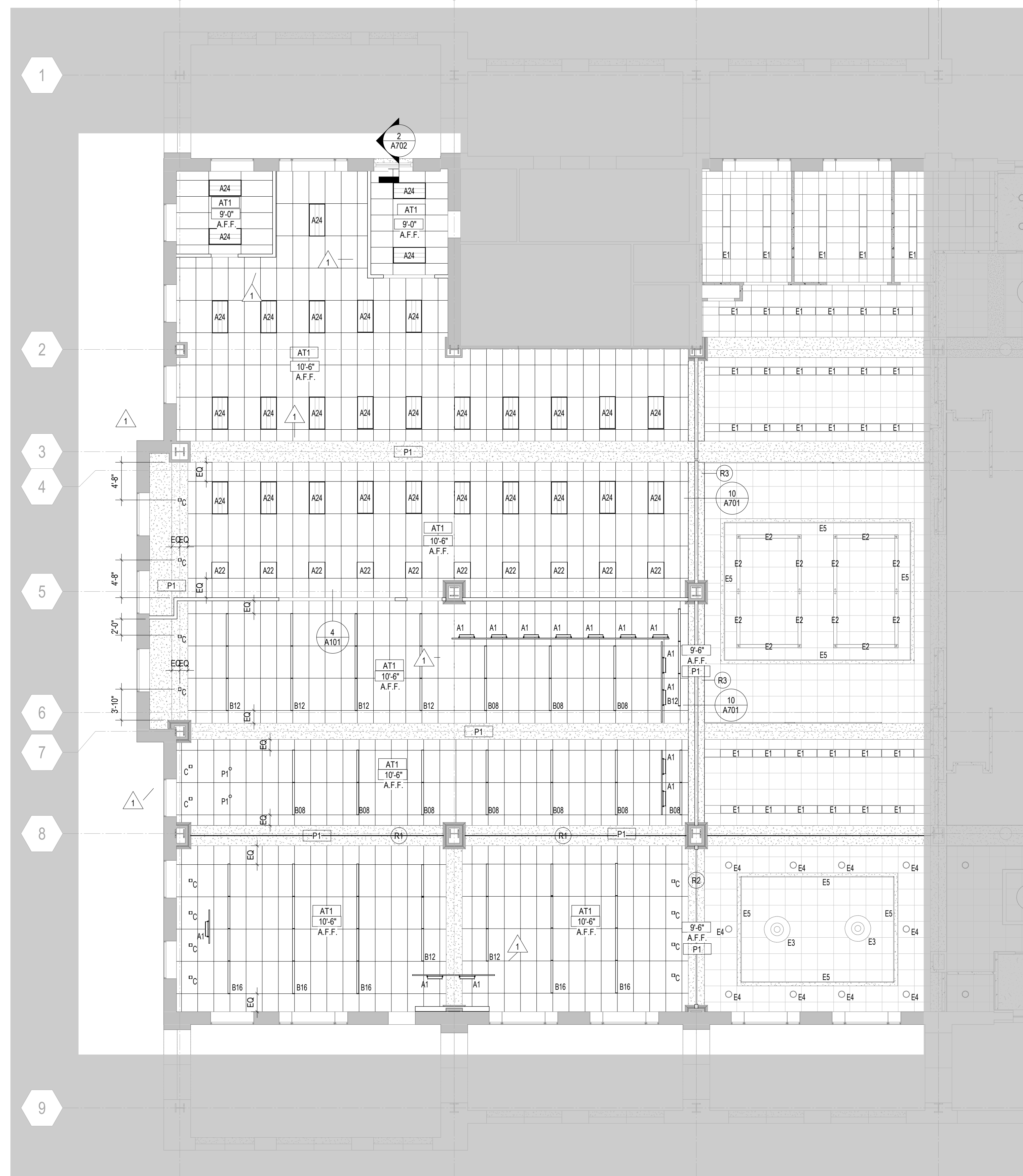
- ALL DIMENSIONS ARE INDICATED FROM THE FINISH FACE OF WALL U.O.N.
- PROVIDE 4" CRITICAL DIMENSIONS BETWEEN ALL DOOR OPENINGS AND WALLS AT HINGE SIDE U.O.N. TYP.
- ANY PLYWOOD USED IN CONSTRUCTION TO BE BFT PLYWOOD.
- IF CONTRACTOR DETERMINES THAT IT WILL BE LESS EXPENSIVE TO DEMOLISH PARTIAL EXISTING WALLS NOW SHOWN TO REMAIN THAT WILL BECOME PART OF NEW GWB PARTITIONS, THEY ARE TO PROCEED WITH DEMO AND RECONSTRUCTION OF NEW IN ITS PLACE.
- ANY DAMAGE CAUSED BY PREVIOUS DEMO AND FINISH REMOVAL TO BE PATCHED AND REPAIRED TO RECEIVE NEW FINISHES.
- GC IS RESPONSIBLE FOR CLEANING ALL EXISTING SPACES ENSURING SPACE IS READY FOR OCCUPANCY.
- GC IS RESPONSIBLE FOR ALL CODE COMPLIANCE SIGNAGE.
- GC IS TO INCLUDE THE PREP OF ALL SURFACES AS REQUIRED TO MEET FACTORY ESTABLISHED STANDARDS TO RECEIVE NEW FINISH.
- CONTRACTOR SHALL COORDINATE ALL TRADE REQUIREMENTS AND REPORT CONFLICTS IMMEDIATELY IF FOUND.
- ALL SURFACES SHALL BE PROPERLY PREPARED TO RECEIVE NEW FINISH MATERIAL AS SCHEDULED OR OTHERWISE CALLED FOR ON THE PLANS.
- REFER TO SHEET A901 FOR FINISHES, LOCATIONS AND DETAILS, INCLUDING PAINT COLORS.
- PROVIDE MINIMUM 18" CLEAR DIMENSION BETWEEN ALL DOOR OPENINGS AND ANY OBSTRUCTION AT THE PULL SIDE.
- CONTRACTOR SHALL PROVIDE FIRE RATED BLOCKING IN WALLS WHERE REQUIRED.
- CONTRACTOR SHALL VERIFY AND CONFIRM PROPER METAL STUD GAUGE AND SPACING AND REPORT CONFLICTS TO ARCHITECT IMMEDIATELY IF FOUND.

PLAN LEGEND

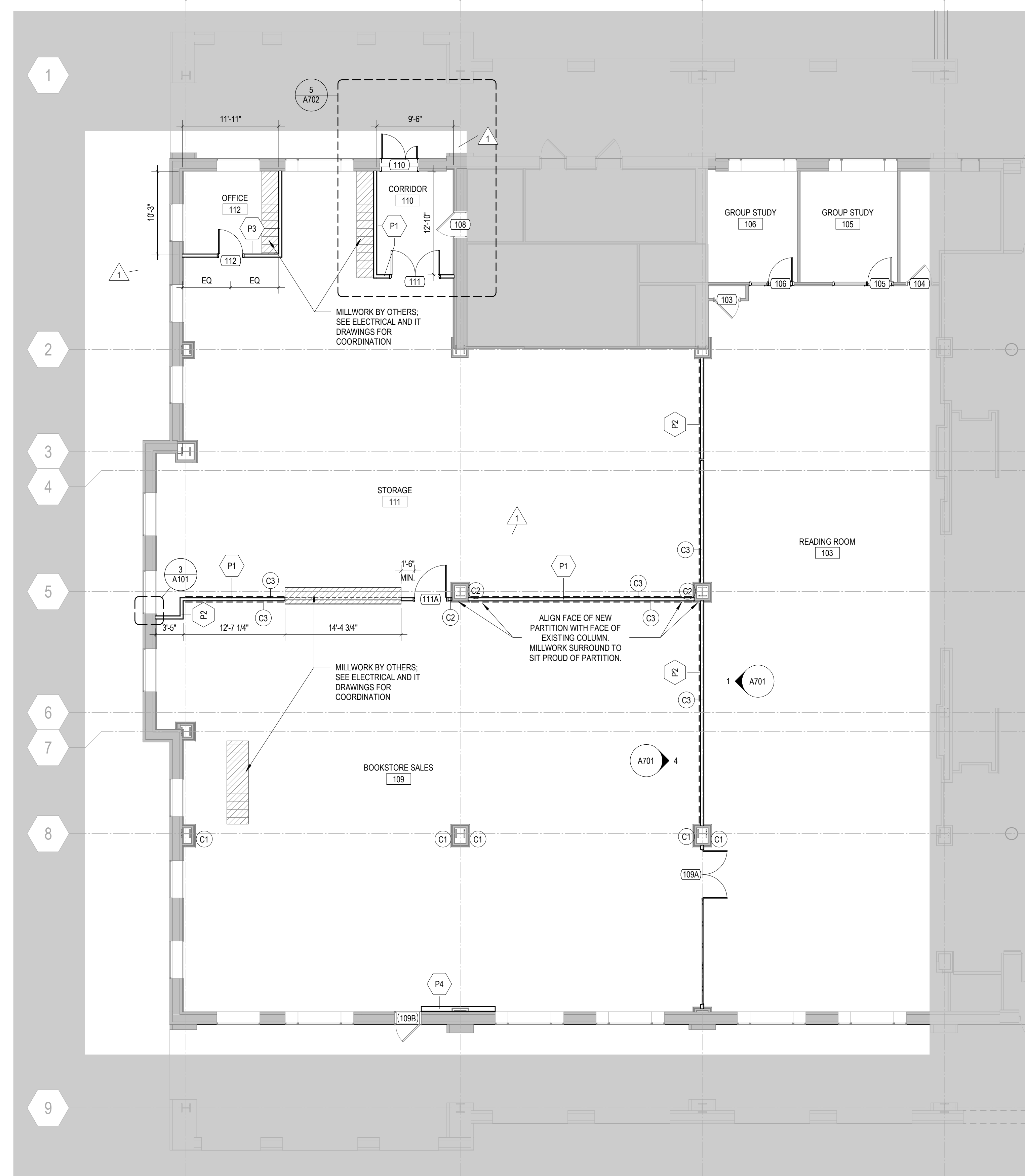
	NEW CONSTRUCTION
	EXISTING CONSTRUCTION TO REMAIN
	AREA NOT IN CONTRACT SCOPE
	PLAN KEYNOTE
	DOOR TAG
	PARTITION TYPE TAG
	METAL STRAPPING - REFER TO PTYPE DETAILS



3
A101
PLAN DETAIL
1 1/2" = 1'-0"



2
A101
RCP - LEVEL 1
1/8" = 1'-0"



1
A101
CONSTRUCTION PLAN - LEVEL 1
1/8" = 1'-0"

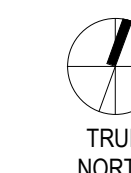
TCNJ SPIRIT SHOP
R. Barbara Gitenstein Library Renovation
THE COLLEGE OF NEW JERSEY
200 PENNINGTON RD
EWING TOWNSHIP, NJ 08618

No.	Date	Description
1	01/15/2026	Addendum 1
2	01/16/2026	Addendum 2

KSS ARCHITECTS
337 Witherspoon Street
Princeton, NJ 08542
t: 609.921.1131
www.kssarchitects.com
R.G. VANDERWEIL ENGINEERS, LLP
718 Arch Street
Philadelphia, PA 19106-1530
215.923.1608



DCA SUBMISSION
Project No.: 2025-23302
Issued: 12/17/2025
CONSTRUCTION PLAN & RCP



A101

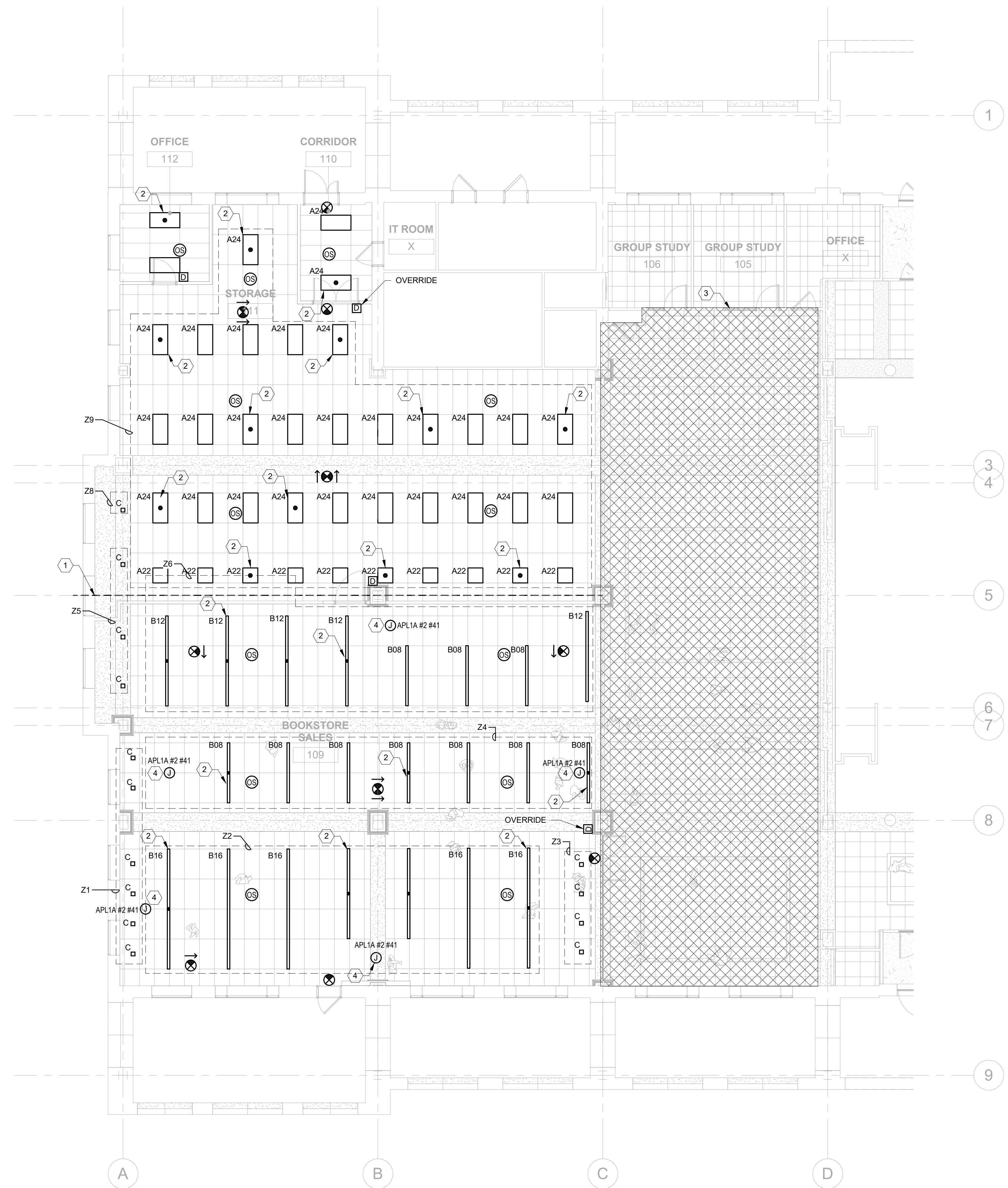
1/16/2026 12:24:24 PM Autodesk Docs://77541946-3960-4900-2002-23302 TCNJ Library Spirit Shop Renovation.rvt

THE LINE SHOWN AT LEFT IS EXACTLY ONE INCH LONG AT THIS SHEET'S ORIGINAL PAGE SIZE

LIGHTING FIXTURE SCHEDULE											
TYPE	DESCRIPTION	MOUNTING	MANUFACTURER	MODEL	VOLTAGE	TOTAL WATTAGE	POWER FACTOR	LUMENS OUTPUT	COLOR TEMP.	LAMP	COMMENTS
A22	2X2 BACKLIT FLAT PANEL LAY-IN TROFFER	RECESSED	COLUMBIA LIGHTING	CBT22-A-LSCS-EDD	277	38	0.9	1501 lm	3500 K	LED	
A24	2X4 BACKLIT FLAT PANEL LAY-IN TROFFER	RECESSED	COLUMBIA LIGHTING	CBT24-A-LSCS-EDD	277	48	0.9	5500 lm	3500 K	LED	
B08	3" WIDE 8FT LONG LINEAR RECESSED FIXTURE	RECESSED	HE WILLIAMS	LRX3X-8-L8/835-S-DMA-DIM-UNV	277	55	0.9	6434 lm	3500 K	LED	
B12	3" WIDE 12FT LONG LINEAR RECESSED FIXTURE	RECESSED	HE WILLIAMS	LRX3X-12-L8/835-S-DMA-DIM-UNV	277	83	0.9	9651 lm	3500 K	LED	
B16	3" WIDE 16FT LONG LINEAR RECESSED FIXTURE	RECESSED	HE WILLIAMS	LRX3X-16-L8/835-S-DMA-DIM-UNV	277	111	0.9	12868 lm	3500 K	LED	
C	6" RECESSED SQUARE DOWNLIGHT	RECESSED	SLG	DRS-6S-L.S15-G4-9FSK	277	13	0.9	1450 lm	3500 K	LED	
X1	THERMOPLASTIC EXIT SIGN (BOH)	UNIVERSAL	EATON, SURE-LITES	APX-6-R	277	2	0.9			LED	COORDINATE FACES AND CHEVRONS WITH FLOOR PLANS. COORDINATE MOUNTING KIT WITH FLOOR PLANS.

ELECTRICAL KEYNOTES

- ① NORMAL POWER LIGHTING FIXTURES ABOVE DASHED LINE SHALL BE POWERED FROM PANEL LPH1, CIRCUIT 27. NORMAL POWER LIGHTING FIXTURES BELOW DASHED LINE SHALL BE POWERED FROM PANEL LPH1, CIRCUIT 29. REFER TO PANEL SCHEDULE ON E400.
- ② CONNECT LIGHTING FIXTURE TO EMERGENCY LIFE SAFETY CIRCUIT RETAINED DURING DEMOLITION.
- ③ LIGHTING IS EXISTING AND OUTSIDE OF SCOPE.
- ④ PROVIDE 120V LIGHTING BRANCH CIRCUIT AND TERMINATE INSIDE JUNCTION BOX OVERHEAD FOR FUTURE INSTALLATION OF BARNES AND NOBLES PROVIDED FIXTURES, WHICH SHALL BE ON THE SAME SWITCHLEG AS THE OTHER FIXTURES IN THE VICINITY. INSTALLATION OF FUTURE LIGHTS IS NOT PART OF THIS SCOPE OF WORK.



① LIGHTING - LEVEL 1
1/8" = 1'-0"

TCNJ SPIRIT SHOP
R. Barbara Gitenstein Library Renovation
THE COLLEGE OF NEW JERSEY
 200 PENNINGTON RD
 EWING TOWNSHIP, NJ 08618

No.	Date	Description
1	01/15/2026	Addendum 1
2	01/16/2026	Addendum 2

KSS ARCHITECTS
 600 Chestnut Street
 Suite 944
 Philadelphia, PA 19106
 t: 215.320.3000
 www.kssarchitects.com



DCA SUBMISSION
 Project No.: 2025-23302
 Issued: 12/17/2025
ELECTRICAL LIGHTING
PLAN - LEVEL 1



NARRATIVE FOR PREVIOUS ADDENDUM NO. 1

Date: January 16, 2026

Re: TCNJ Spirit Shop

Changes to Drawings

Architectural

G101 Life Safety Plan Level 1

- Revised occupancy tables associated with partition layout revisions.

A101 Construction Plan & RCP

- Revised partition arrangements, Room 109, Room 110, Room 111, Room 112.
- Revised ceiling layout based on the above.
- Added detail for new partitions at existing exterior walls.

A701 Door Schedule, Interior Elevations & Details

- Added ceiling header detail 4.
- Added strapping requirements to partitions P1 and P2
- Added partition types P3 and P4

A901 Finish Plan & Schedule

- Revised floor finish type and layout

Electrical

E201 Electrical Power Plan

- Receptacles added for work stations
- Dedicated receptacles added in Office 112 for IT equipment
- Electrical room updated to show section 2 of panel APL1A. Circuits added to this panel
- Junction boxes added to convey scope for contractor to pull new circuits to be later wired to receptacles in casework by casework provider
- Three dedicated receptacles added for coolers
- Two poke through devices added for floor power

NEW YORK

163 W 23rd Street, 5th Floor
New York, NY 10011
T 332.895.7300

PHILADELPHIA

1100 Ludlow Street, Suite 502
Philadelphia, PA 19107
T 215.320.3000

PRINCETON

337 Witherspoon Street
Princeton, NJ 08542
T 609.921.1131

KSSARCHITECTS.COM

KSS ARCHITECTS LLP

Jason Chmura, AIA, LEED AP | Mayva Donnon, AIA, LEED AP | Petar Mattioni, AIA, LEED AP
Matthew McChesney, AIA, LEED AP | Merilee Meacock, AIA, PP, LEED AP | Scot Murdoch, AIA

E301 Electrical Lighting Plan

- Two addition 'C' fixtures added
- Linear fixture layout and lengths updated to match architectural RCP
- Junction boxes and 120V lighting circuit added for future pendants and track lighting
- Recessed 2'x2' fixture layout revised to match architectural RCP
- Lighting layout in Office 112 revised to match architectural RCP

E400 Electrical Panel Schedules and Details

- Panel APL1A #1 schedule revised to convey added circuits
- Panel APL1A #2 schedule added which includes new circuits

Fire Alarm

FA201 Fire Alarm – Level 1

- Detection devices added to encompass the entire area
- Keynote added to denote smoke detectors shall be connected to remote preaction release panel

Fire Protection

FP201 Fire Protection – Level 1

- Preaction system revised from demolition to existing to remain
- Keynote removed to reflect change above

Mechanical

M201 HVAC Ductwork Plan – Level 1

- Upsized VAV-3-1 to provide additional cooling to OFFICE 112 based on equipment in the room. Provided another CD-1 diffuser and RG-1 type return grille. Due to the walls of this room now extending to deck, an 18x18 transfer duct was added for return air. Adjusted location of temperature senso
- Shifted diffusers and return grilles in rooms 110 and 111 to align with updated ceiling grid. Adjusted ductwork as required based on these new locations
- Updated extents shown for new finned tube radiators (FTR-1) in rooms 109 and 111

M301 HVAC Piping Plan – Level 1

- Showed new location of temperature senso
- Shifted piping and flows for new finned tube radiators (FTR-1) in rooms 109 and 111 based on new extents
- Updated heating coil capacity based on new airflow required in Office 112

M601 HVAC Schedules

- Updated Variable Volume Terminal Boxes schedule to reflect new size required for VAV-3-1 and removed irrelevant sound attenuation notes

Telecom

TC001 Telecom Symbols and Abbreviations

- “General Notes” updated
- “Telecom Backbox Requirements” table updated
- “Telecom Symbols Legend” table updated

TC201 Telecom – Level 1

- Data drops added per Barnes & Nobles drawings
- Demolition sheet notes updated
- Note added that cabling shall be performed by others and coordinated with millwork
- WAP device removed
- Camera removed

Specifications

096500 Resilient Flooring

- Revised Specifications to include LVT; removed base and SDT

END OF ADDENDUM NO. 1



NARRATIVE FOR ADDENDUM NO. 2

Date: January 16, 2026

Re: TCNJ Spirit Shop

Changes to Drawings

Architectural

A101 Construction Plan & RCP

- Revised lighting legend descriptions of A1 and P1 fixtures

Electrical

E301 Electrical Lighting Plan

- Revised keynote 4 to clarify that future fixtures are to be supplied by Barnes and Nobles and installed under scope of future project. Future fixtures will be controlled the same as other lights in the vicinity

END OF ADDENDUM NO. 2

NEW YORK

163 W 23rd Street, 5th Floor
New York, NY 10011
T 332.895.7300

PHILADELPHIA

1100 Ludlow Street, Suite 502
Philadelphia, PA 19107
T 215.320.3000

PRINCETON

337 Witherspoon Street
Princeton, NJ 08542
T 609.921.1131

KSSARCHITECTS.COM

KSS ARCHITECTS LLP

Jason Chmura, AIA, LEED AP | Mayva Donnon, AIA, LEED AP | Petar Mattioni, AIA, LEED AP
Matthew McChesney, AIA, LEED AP | Merilee Meacock, AIA, PP, LEED AP | Scot Murdoch, AIA



Library Spirit Shop

MILESTONE SCHEDULE

Revised January 16, 2026

Bids Released	12/23/25
*Pre-bid Meeting, 2:00 pm, ASB 203	1/5/26
Last day for questions	1/9/26
Addendum issued	1/15/26
Addendum 2 issued	1/20/26
Bids due to TCNJ 2:00 pm	1/29/26
Notice of Intent to Award Issued	2/2/26
Notice to Proceed Issued by	2/9/26
Kick-off Meeting	2/11/26
Mobilize and Start construction	2/12/26
Substantial Completion	6/1/26
Project Closeout by	7/15/26

Attendance is not required at the Pre-bid meeting, but strongly encouraged. The meeting will be held in Administrative Services Building, **Room 203**. Parking is available at the building. We will briefly review the RFP, answer questions, and then take a tour of the building if agreed upon at the meeting.

ALLOWANCE: an allowance of \$50,000 dollars shall be included in the bidders bid amount for unforeseen items not anticipated in the design documents.

GENERAL NOTE 1: The college library will remain fully operational throughout the duration of the construction project. Contractors shall conduct all work with the understanding that the facility will be occupied and in active daily use by students, faculty, staff, and the general public. Maintaining a clean, safe, and orderly environment is a priority and shall be addressed on a daily basis. Construction areas must be properly secured, debris promptly removed, and noise, dust, and disruptions minimized to the greatest extent possible.

GENERAL NOTE 2: Contractor shall construct and install insulated temporary partitions for sound separating the Reading Room (#103) from the Library Main Entry Foyer. Temporary partitions shall be non-destructive to existing millwork and shall be removed at project completion, with all affected areas restored to original condition.

GENERAL NOTE 3: Contractor shall remove the existing exterior window at Corridor (#110) and construct and install a temporary construction entrance door. Temporary door shall be weather-tight,

secure, and equipped with a combination lock set. Coordinate installation and access requirements with the Owner.

GENERAL NOTE 4: Contractor shall disconnect, remove, and properly dispose of existing furniture within the project area. All disposal shall comply with applicable local regulations and waste management requirements.

GENERAL NOTE 5: In late May for 2 days (Thursday and Friday), TCNJ has commencement, no work during these 2 days will be allowed. In addition, the first weekend of June Special Olympics takes place on campus, work can take place but must be indoors only. No deliveries or outside work shall take place during these two events.

GENERAL NOTE 6: Any reference to a specification section that is not included in these bidding documents shall mean these bidding documents do not require said spec section to be a part of these bidding documents.

GENERAL NOTE 7: Any reference in these bidding documents to the bidder paying permit fees shall be disregarded by the bidders: TCNJ pays for all permit fees. The contractor will fill out the permit applications as usual and give to TCNJ for submission to DCA. TCNJ will then pay the permit fee.

GENERAL NOTE 8: Contractor shall coordinate with HONEYWELL for job responsibility prior to submitting bid. All controls, wiring, actuators, etc. are to be provided by HONEYWELL. Contact Joshua Mogck at Joshua.Mogck@honeywell.com – (609) 864 5240.