



**To: All Vendors Bidding on The College of New Jersey
Duct Cleaning Services**

**From: Lauren Manning
Finance & Business Services**

Date: May 1, 2023

ADDENDUM NO. 1

ISSUE DATE: May 1, 2023

REFERENCE: The College of New Jersey
Duct Cleaning Services
Bid No. AB230021

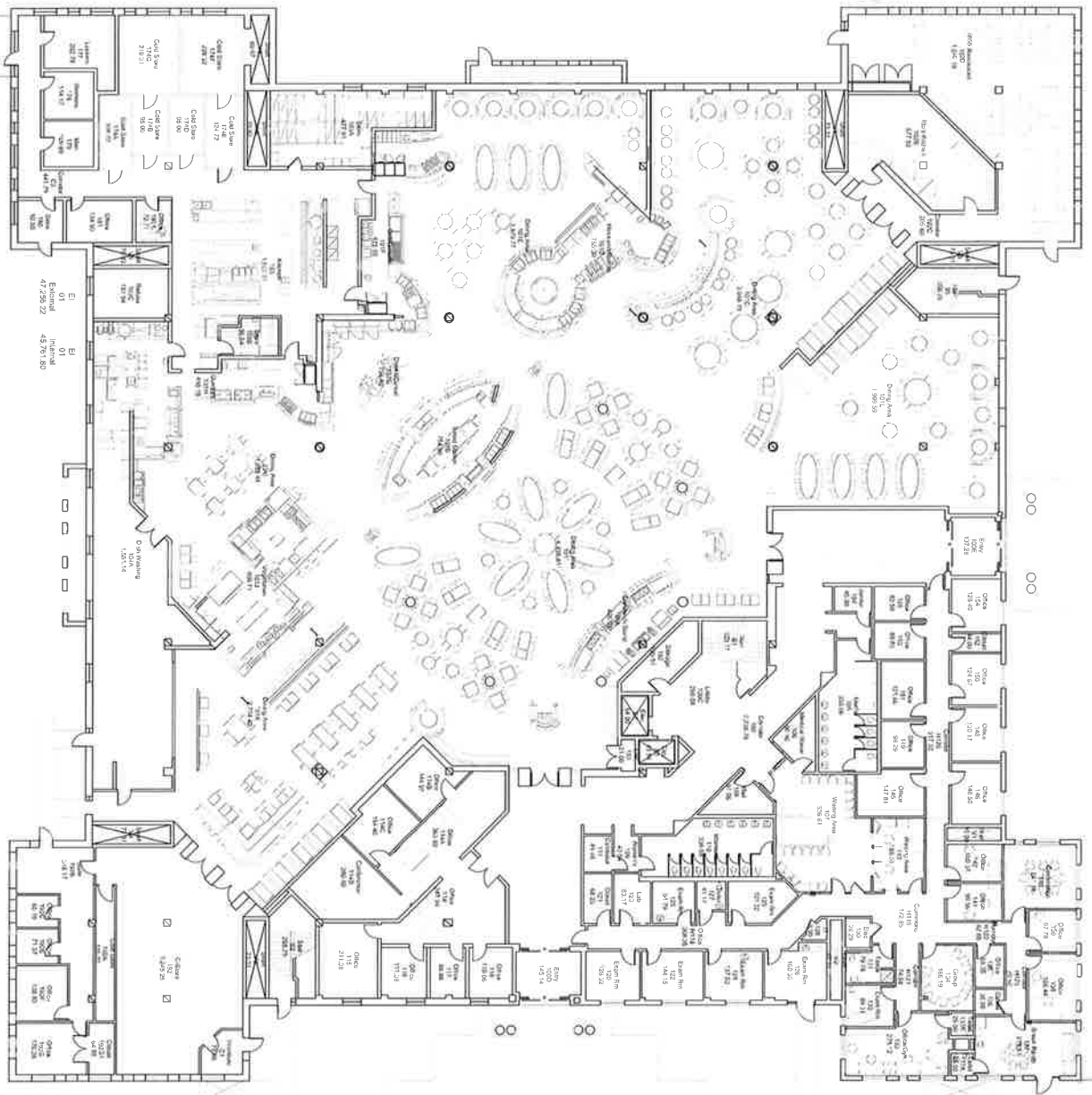
Date of Original Bidding Documents: April 24, 2023

INTENT: This Addendum forms a part of the Contract Documents and modifies the original Bidding Documents and Prior Addenda if any, as identified above. Acknowledge receipt of this Addendum in the space provided on the Bid Form. Failure to do so may subject Bidder to disqualification.

CLARIFICATION:

The drawings were omitted with the original bidding documents. Please see the attached drawings for Duct Cleaning Services.

END OF ADDENDUM NO. 1



EICKHOFF HALL FIRST FLOOR

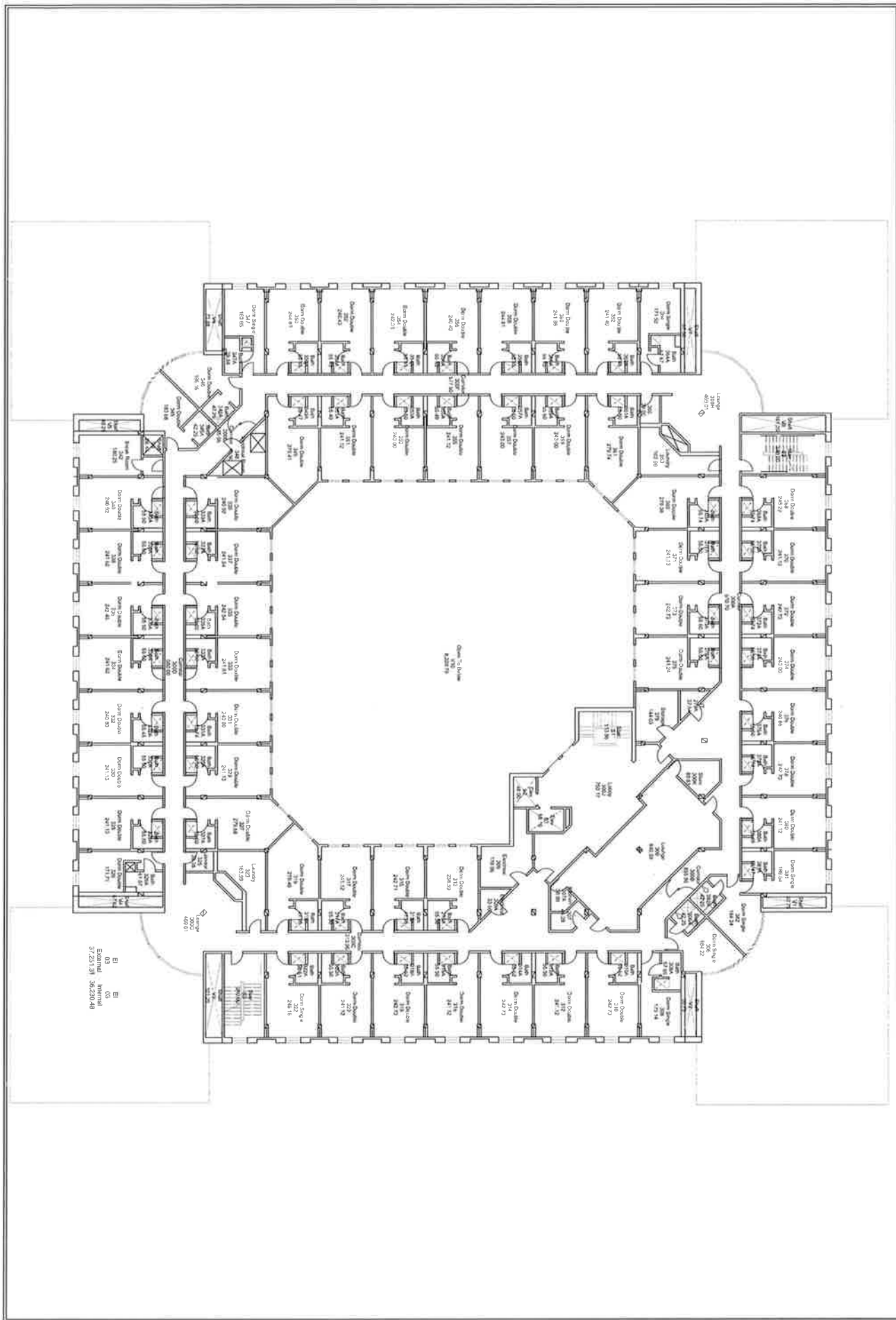


Room by Department

Campus Planning

Revised	May 17, 2022
Scale	Not to Scale
Drawn	XX
Approved	XX
Dwg. No.	XXX

Dwg. No. XXX

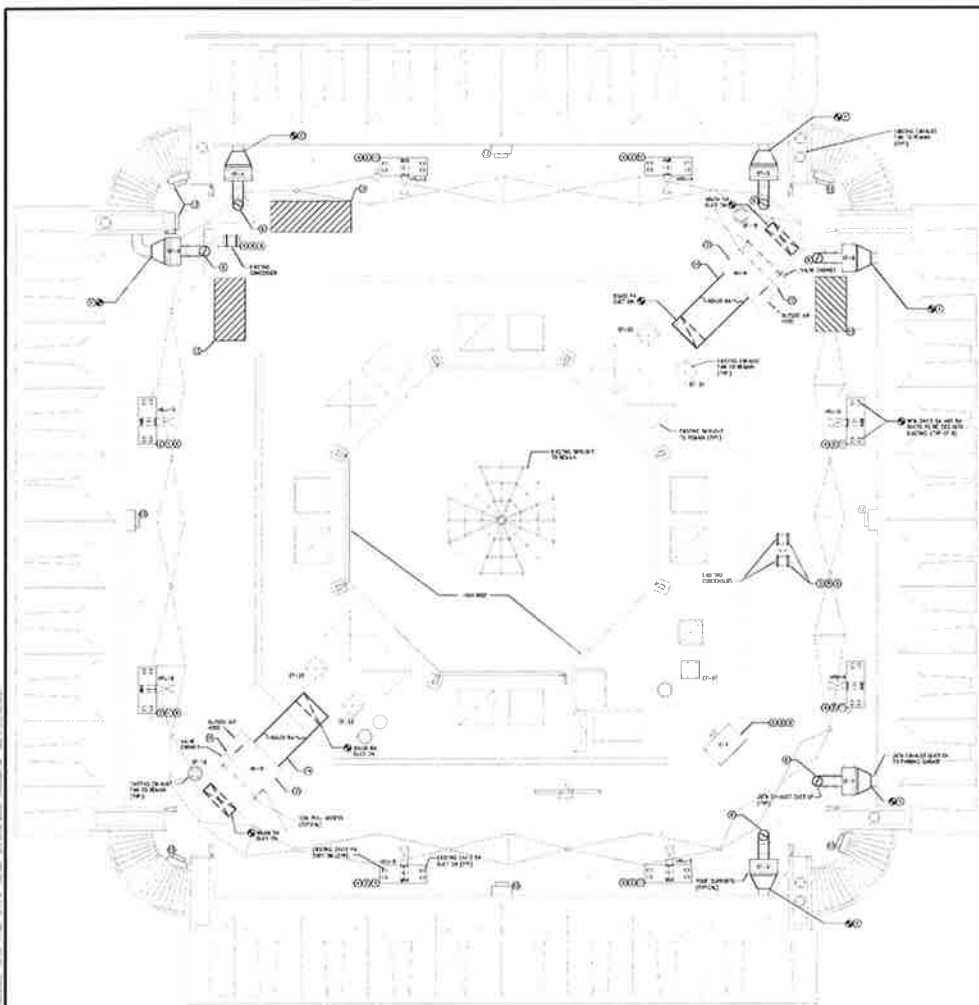


EICKHOFF HALL THIRD FLOOR



Room by Department Campus Planning

Revised	Feb 10, 2022
Scale	Not to Scale
Drawn	XX
Approved	XX
Dwg. No.	XXX



MECHANICAL ROOF PLAN

GENERAL NOTES:
 1. SEE ALL MECHANICAL EQUIPMENT FOR ROOF CURB, PIPING, CONNECTIONS AND TYPING DATA.
 2. FOR ROOF CURB, SEE MECHANICAL EQUIPMENT SCHEDULES.
 3. FOR ROOF CURB, SEE MECHANICAL EQUIPMENT SCHEDULES.
 4. FOR ROOF CURB, SEE MECHANICAL EQUIPMENT SCHEDULES.
 5. FOR ROOF CURB, SEE MECHANICAL EQUIPMENT SCHEDULES.
 6. FOR ROOF CURB, SEE MECHANICAL EQUIPMENT SCHEDULES.
 7. FOR ROOF CURB, SEE MECHANICAL EQUIPMENT SCHEDULES.
 8. FOR ROOF CURB, SEE MECHANICAL EQUIPMENT SCHEDULES.
 9. FOR ROOF CURB, SEE MECHANICAL EQUIPMENT SCHEDULES.
 10. FOR ROOF CURB, SEE MECHANICAL EQUIPMENT SCHEDULES.

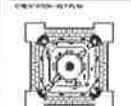
REVISIONS:
 1. REVISION 1: SEE MECHANICAL EQUIPMENT SCHEDULES FOR ROOF CURB, PIPING, CONNECTIONS AND TYPING DATA.
 2. REVISION 2: SEE MECHANICAL EQUIPMENT SCHEDULES FOR ROOF CURB, PIPING, CONNECTIONS AND TYPING DATA.
 3. REVISION 3: SEE MECHANICAL EQUIPMENT SCHEDULES FOR ROOF CURB, PIPING, CONNECTIONS AND TYPING DATA.
 4. REVISION 4: SEE MECHANICAL EQUIPMENT SCHEDULES FOR ROOF CURB, PIPING, CONNECTIONS AND TYPING DATA.
 5. REVISION 5: SEE MECHANICAL EQUIPMENT SCHEDULES FOR ROOF CURB, PIPING, CONNECTIONS AND TYPING DATA.
 6. REVISION 6: SEE MECHANICAL EQUIPMENT SCHEDULES FOR ROOF CURB, PIPING, CONNECTIONS AND TYPING DATA.
 7. REVISION 7: SEE MECHANICAL EQUIPMENT SCHEDULES FOR ROOF CURB, PIPING, CONNECTIONS AND TYPING DATA.
 8. REVISION 8: SEE MECHANICAL EQUIPMENT SCHEDULES FOR ROOF CURB, PIPING, CONNECTIONS AND TYPING DATA.
 9. REVISION 9: SEE MECHANICAL EQUIPMENT SCHEDULES FOR ROOF CURB, PIPING, CONNECTIONS AND TYPING DATA.
 10. REVISION 10: SEE MECHANICAL EQUIPMENT SCHEDULES FOR ROOF CURB, PIPING, CONNECTIONS AND TYPING DATA.

NO.	DATE	BY	CHKD	DESCRIPTION
1	10/1/00	JD	JD	ISSUED FOR CONSTRUCTION

CONSULTANT

CONTRACTOR

SCALE: 1/8" = 1'-0"



PS&S

Professional Engineer
 N.J. REG. NO. 12000
 N.J. REG. NO. 12000
 N.J. REG. NO. 12000

MANITO G. KANDAR
 PROFESSIONAL ENGINEER
 N.J. REG. NO. 12000

DATE: 10/1/00

CHECKED: JD

THE COLLEGE OF NEW JERSEY

RICKS HALL

HVAC AND ROOF MODIFICATIONS

MECHANICAL ROOF PLAN

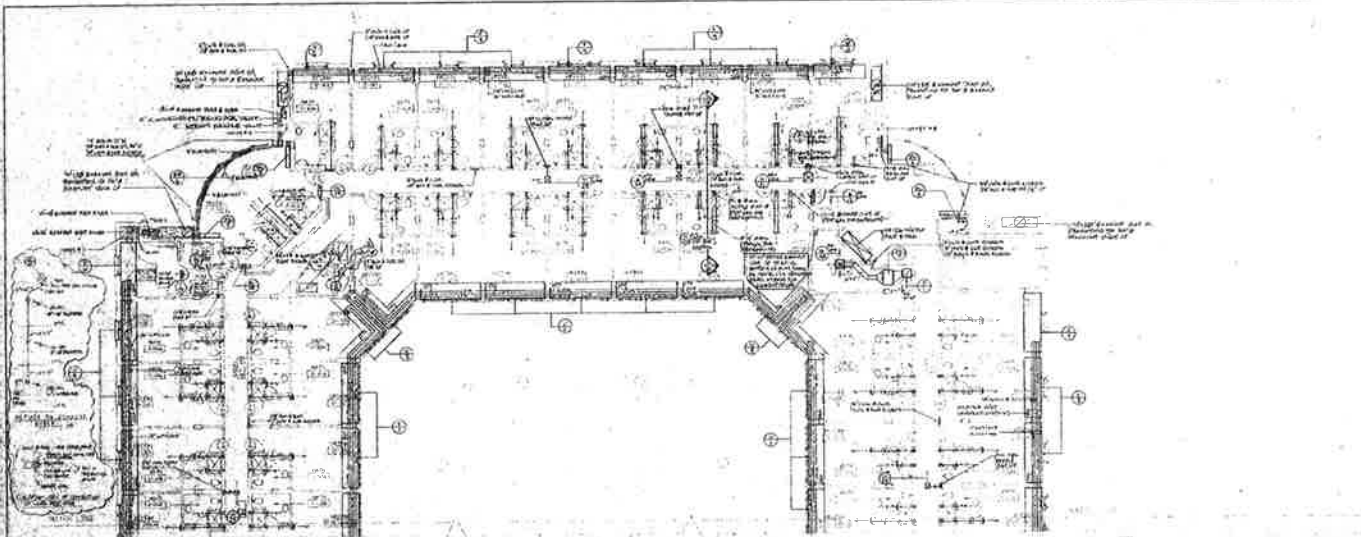
DATE: 10/1/00

BY: JD

CHKD: JD

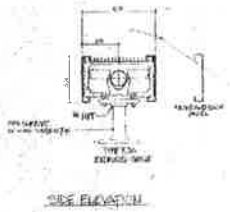
DATE: 10/1/00

PROJECT NO. M-104

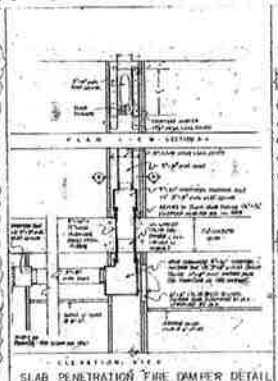


SECOND FLOOR PLAN - WEST
SCALE: 1/8"=1'-0"

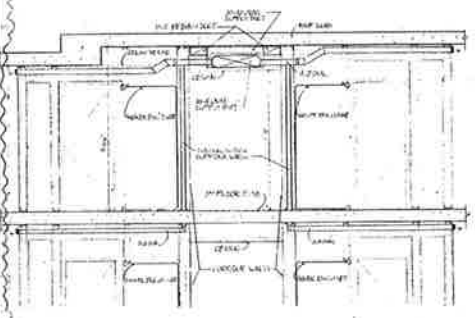
NOTES:
1. See contractor to provide terms for, provide, and set slabs for all sections and rooms of this work, showing through the walls and floor slabs, complete with the concrete slabs to meet the existing floor of concrete. All work must be done in accordance with the existing floor of concrete. All work must be done in accordance with the existing floor of concrete. All work must be done in accordance with the existing floor of concrete.



1. WALL PENETRATION DETAIL (SEE ELEVATION)



2. SECTION
SCALE: 1/8"=1'-0"



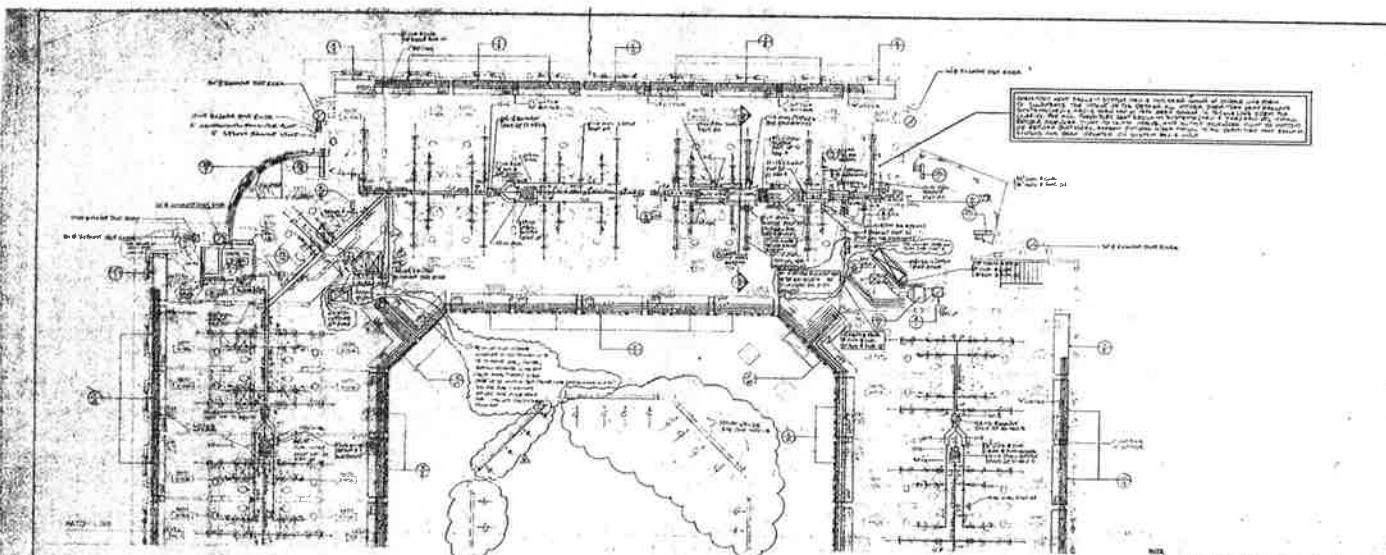
2. SECTION
SCALE: 1/8"=1'-0"

NK
NADARAY KOPPELSON

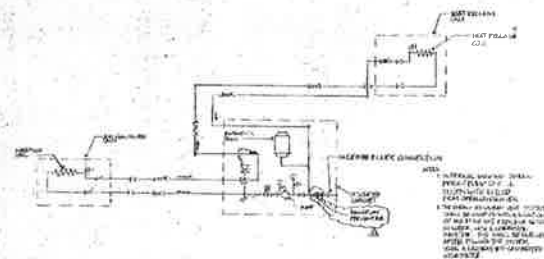
PROJECT: TRENTON STATE COLLEGE
PHILIPS HALL
HVAC-13

DATE: 10/1/88
BY: [Signature]
CHECKED: [Signature]
APPROVED: [Signature]

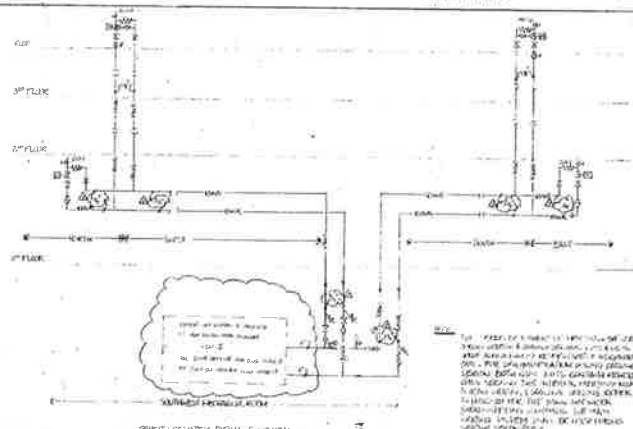
[illegible]



THIRD FLOOR PLAN - WEST
SCALE: 1/8" = 1'-0"



1. TYPICAL ENERGY RECOVERY UNIT PIPING SCHEMATIC (ER-112)
NO SCALE



REHEAT HOT WATER PIPING SCHEMATIC
NO SCALE

NK
NADASKAY HORNELSON

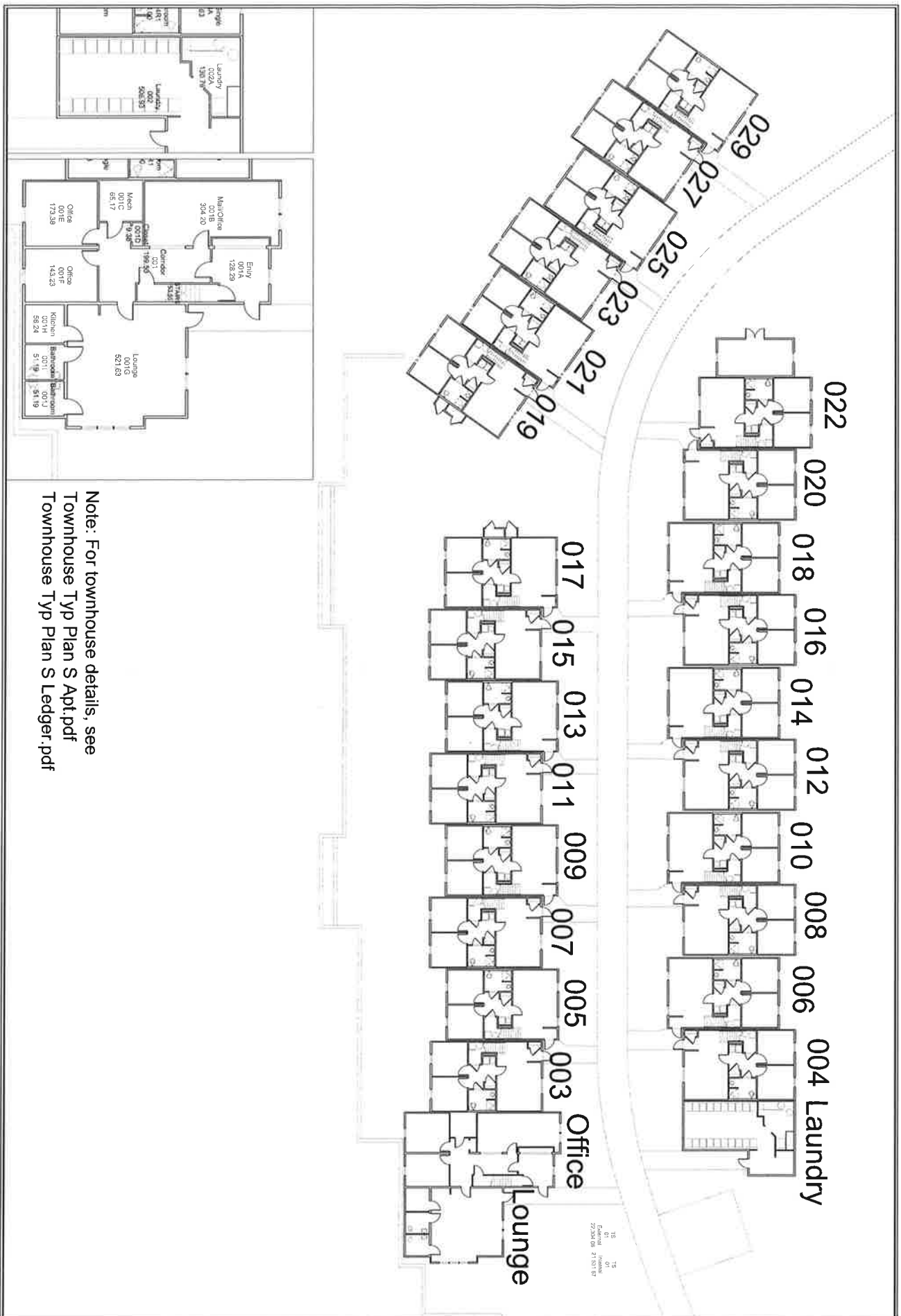
PROJECT: TRENTON STATE COLLEGE
CLIENT: TRENTON STATE COLLEGE
DESIGNER: NADASKAY HORNELSON
DATE: 10/1/88

TRENTON
STATE
COLLEGE

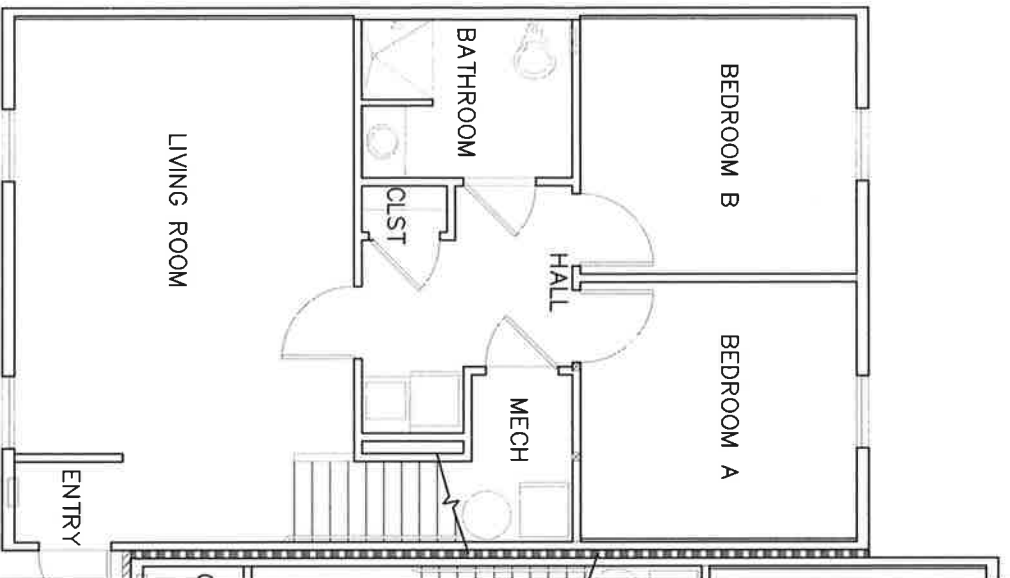
PHELPS
HALL

NO.	REVISION	DATE
1	ISSUED FOR PERMIT	10/1/88
2	REVISED FOR PERMIT	10/1/88
3	REVISED FOR PERMIT	10/1/88
4	REVISED FOR PERMIT	10/1/88
5	REVISED FOR PERMIT	10/1/88
6	REVISED FOR PERMIT	10/1/88
7	REVISED FOR PERMIT	10/1/88
8	REVISED FOR PERMIT	10/1/88
9	REVISED FOR PERMIT	10/1/88
10	REVISED FOR PERMIT	10/1/88

HVAC-15



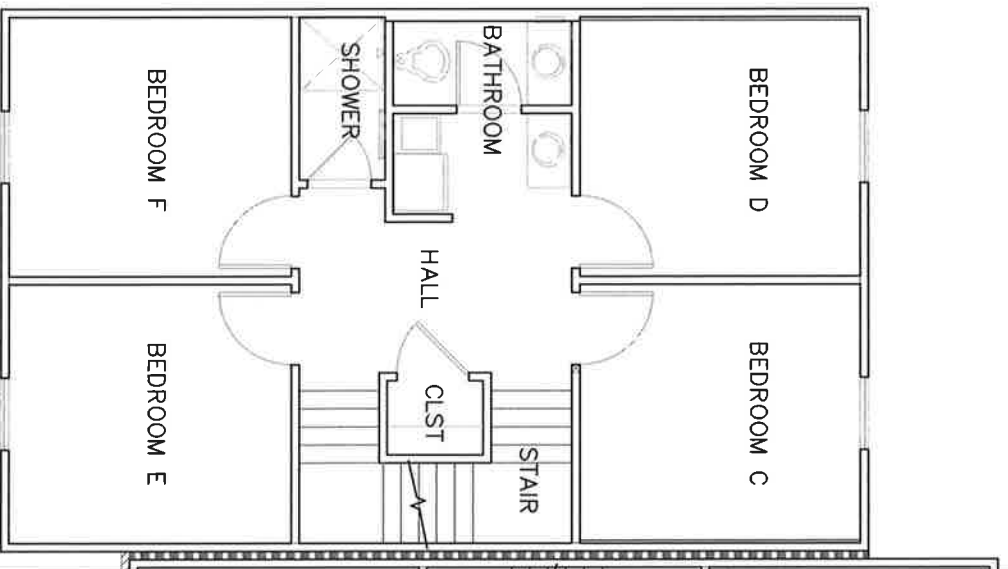
FOREST VIEW



FIRST FLOOR PLAN

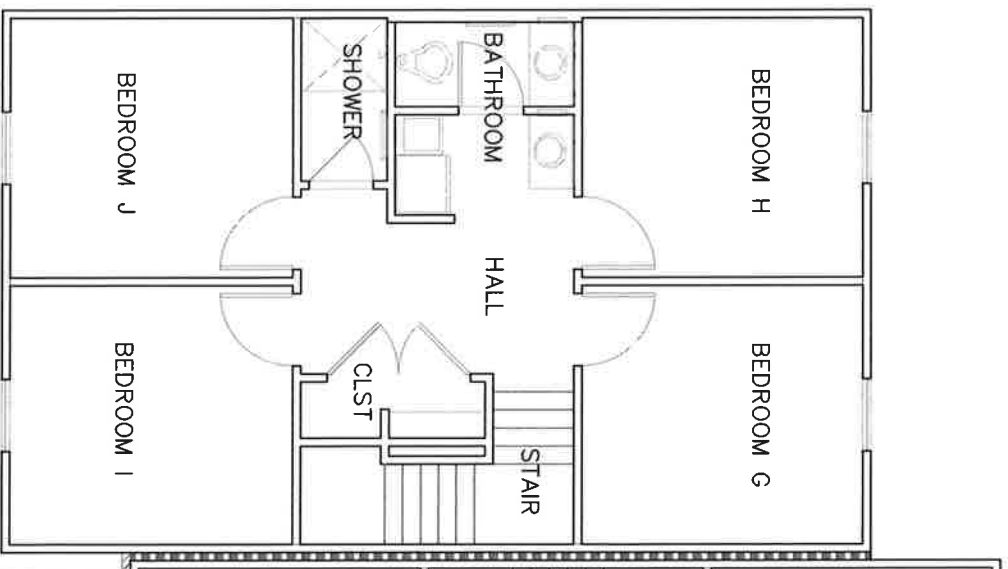
SOUTH CLUSTER LAYOUT

FOREST VIEW



SECOND FLOOR PLAN

FOREST VIEW



THIRD FLOOR PLAN

PROJECT NAME:

TCNJ TOWNHOUSES

SHEET NAME:

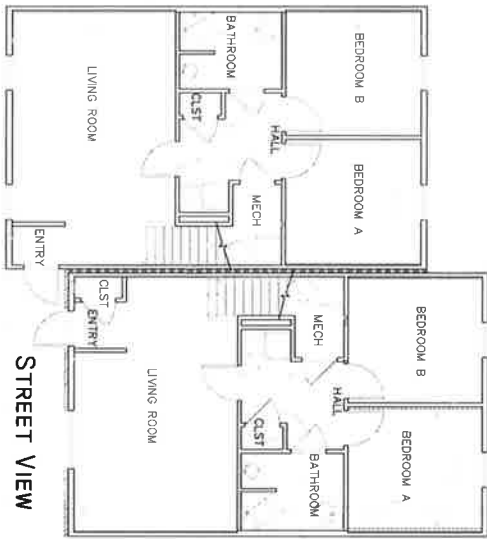
TYPICAL 3 FLOOR SOUTH UNIT PLAN

ISSUE DATE:
9/17/21

THS

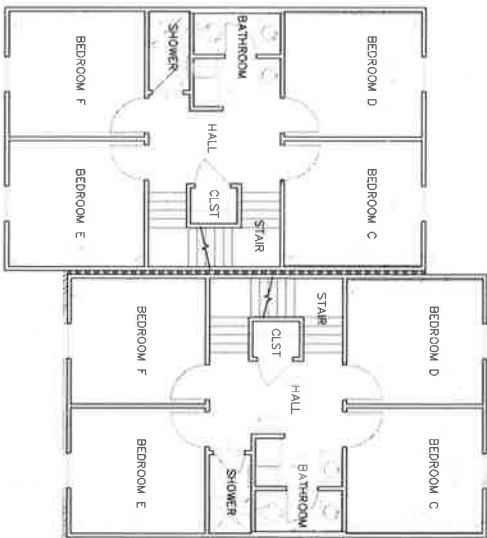
UNIT A MIRR.
FOREST VIEW

UNIT B MIRR.



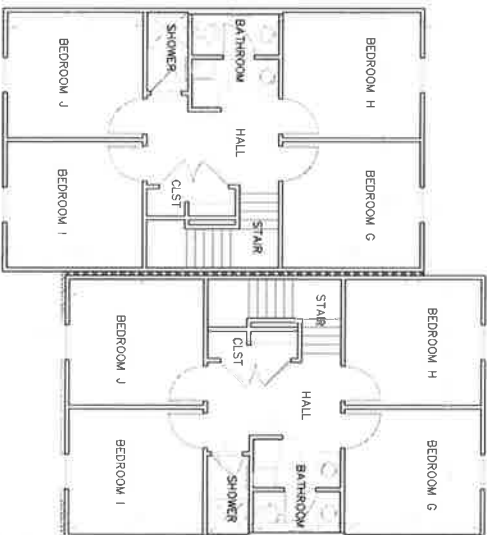
UNIT A MIRR.
FOREST VIEW

UNIT B MIRR.



UNIT A MIRR.
FOREST VIEW

UNIT B MIRR.



FIRST FLOOR PLAN

SOUTH CLUSTER LAYOUT

SECOND FLOOR PLAN

STREET VIEW

THIRD FLOOR PLAN

STREET VIEW

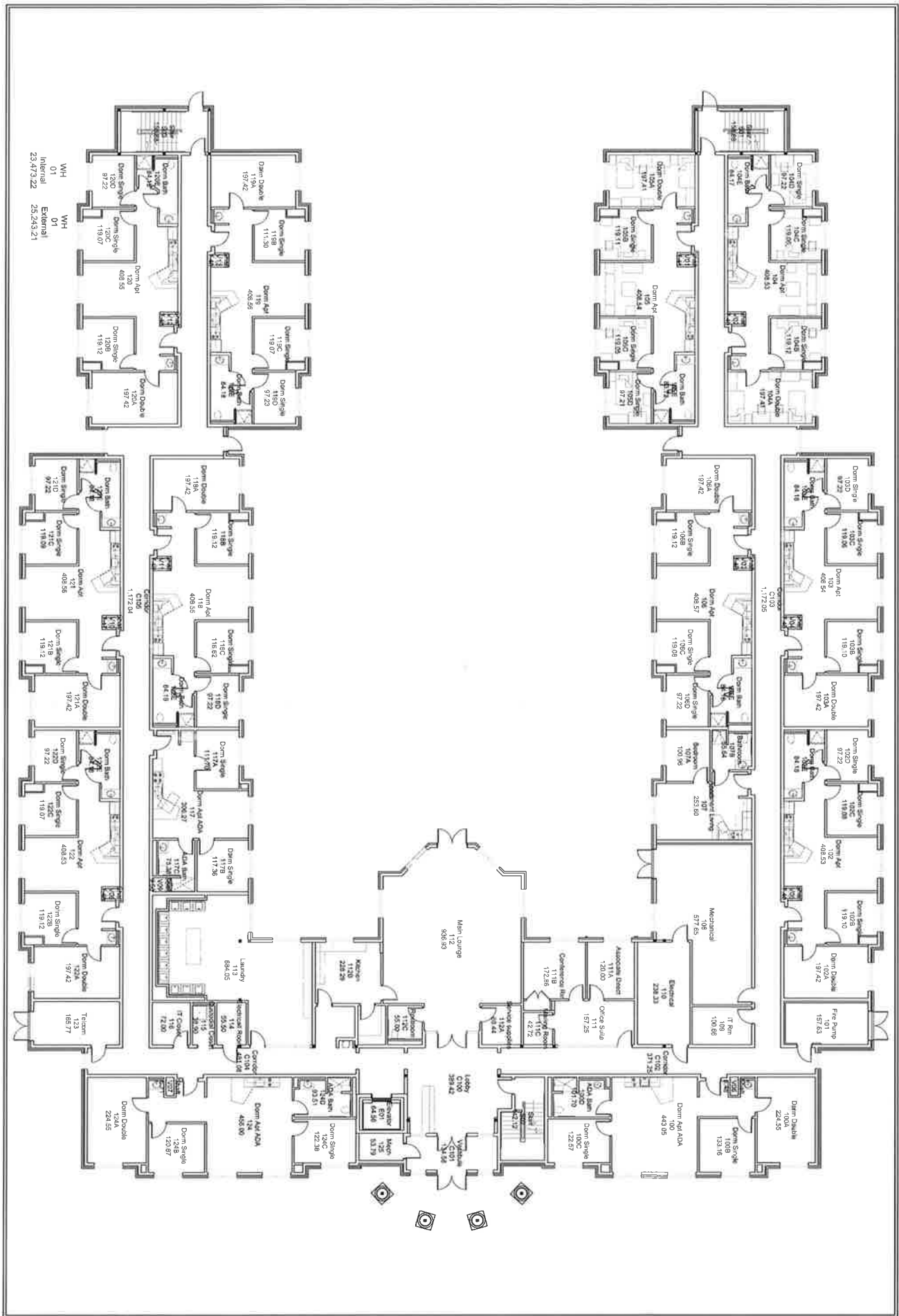
TOWNHOUSE SOUTH TYPICAL FLOOR PLAN

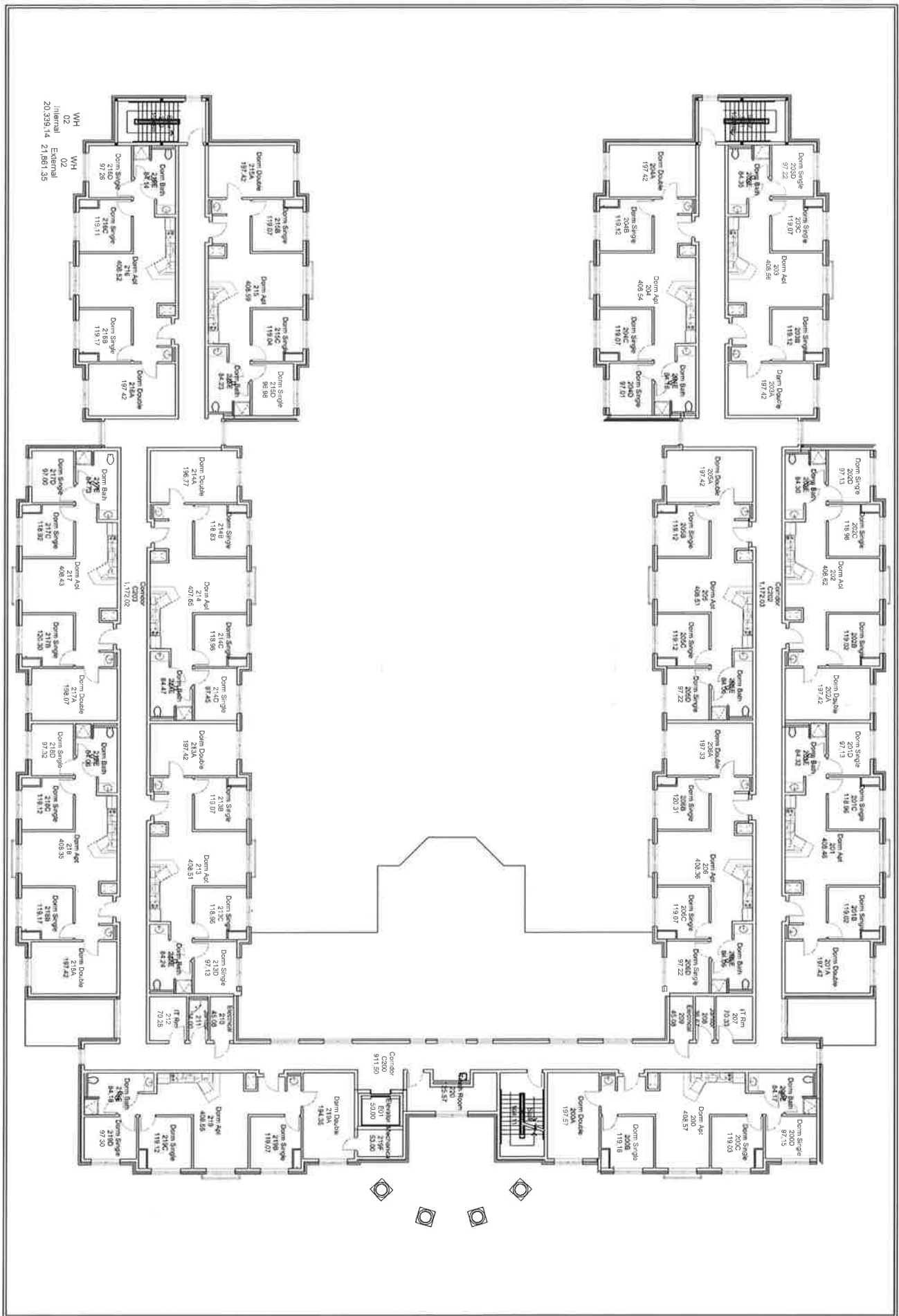


Room by Department

Campus Planning

Revised	August 24, 2021
Scale	Not to Scale
Drawn	XX
Approved	XX
Dwg. No.	XXX





WH
D2
Internal
20,359.14
21,861.35

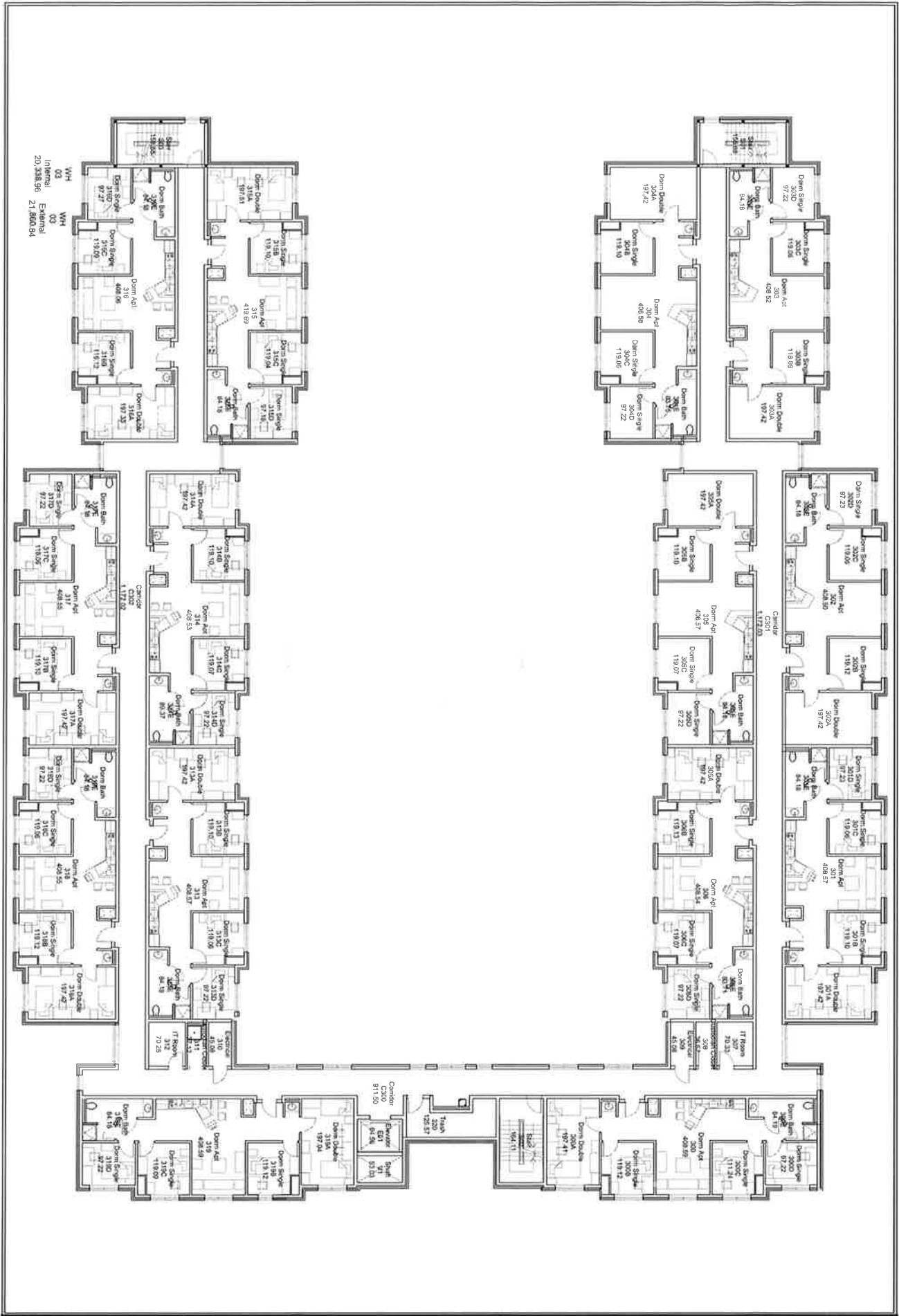
HAUSDORFER HALL SECOND FLOOR



Room by Department

Campus Planning

Revised	Feb 17, 2022
Scale	Not to Scale
Drawn	XX
Approved	XX
Dwg. No.	XXX



HAUSDORFER HALL THIRD FLOOR

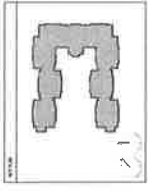


Room by Department

Campus Planning

Revised	April 14, 2022
Scale	Not to Scale
Drawn	XX
Approved	XX
Dwg. No.	XXX

THIS DRAWING IS THE PROPERTY OF FLETCHER THOMPSON ARCHITECTURE. IT IS TO BE USED ONLY FOR THE PROJECT AND SITE SPECIFICALLY IDENTIFIED HEREON. IT IS NOT TO BE REPRODUCED, COPIED, OR TRANSMITTED IN ANY FORM OR BY ANY MEANS, ELECTRONIC OR MECHANICAL, WITHOUT THE WRITTEN PERMISSION OF FLETCHER THOMPSON ARCHITECTURE.



FLETCHER THOMPSON ARCHITECTURE
 100% DESIGN DEVELOPMENT SET
 3/2/07
 100% DESIGN DEVELOPMENT SET
 3/2/07

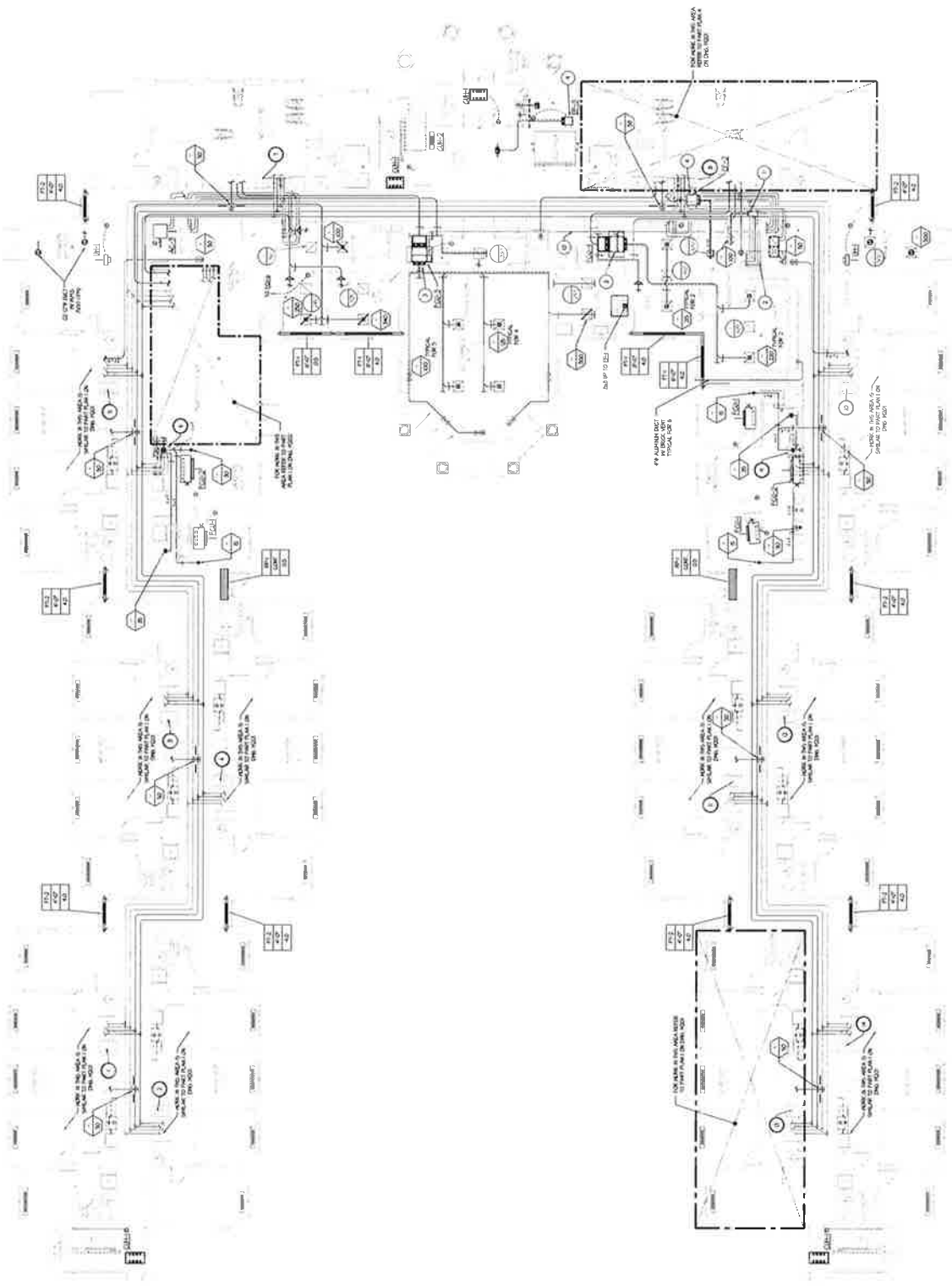
100% DESIGN DEVELOPMENT SET
 3/2/07
 100% DESIGN DEVELOPMENT SET
 3/2/07

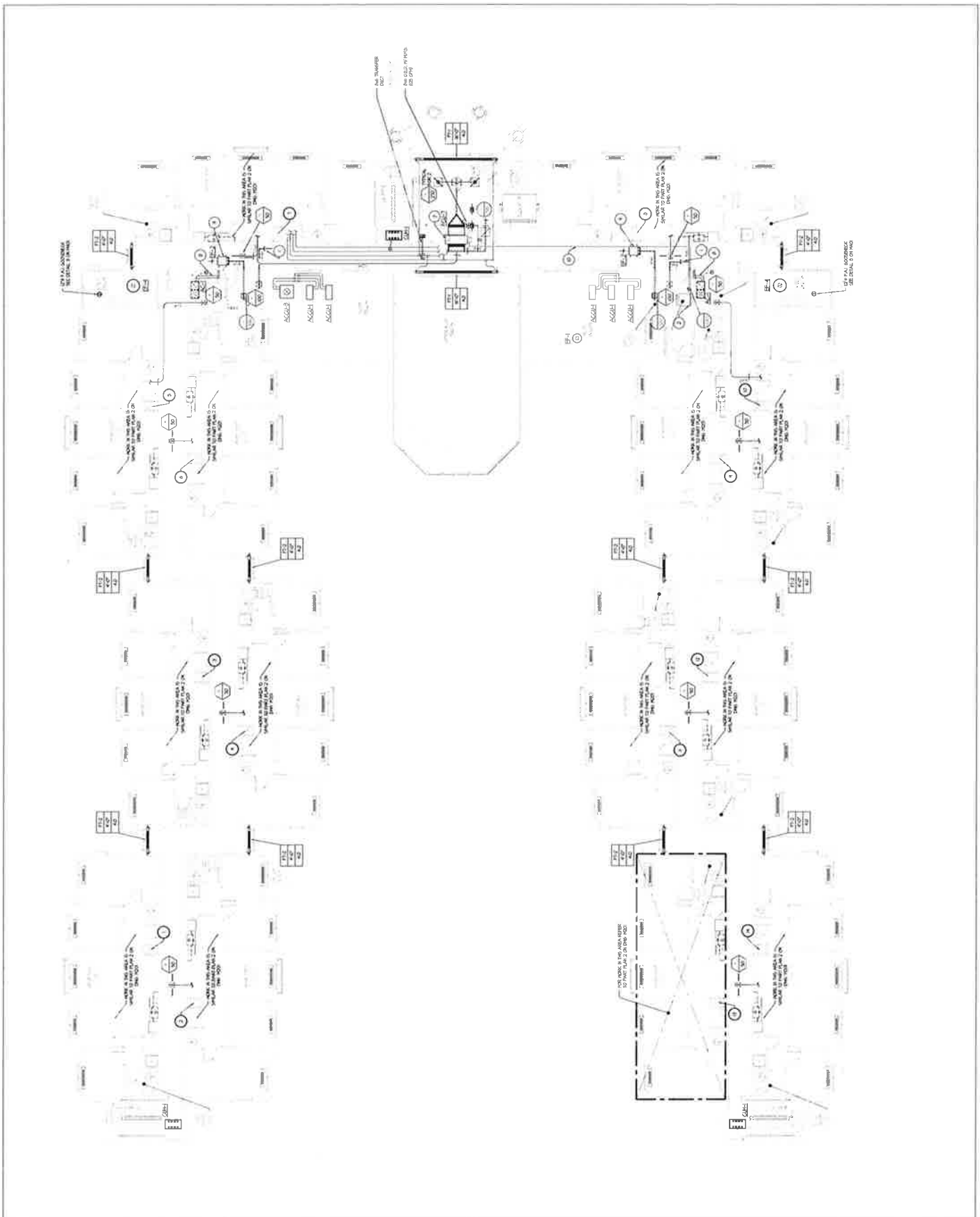
FLETCHER THOMPSON ARCHITECTURE
 100% DESIGN DEVELOPMENT SET
 3/2/07
 100% DESIGN DEVELOPMENT SET
 3/2/07

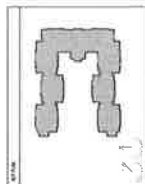
THE COLLEGE OF NEW JERSEY
 STUDENT APARTMENTS
 BUILDINGS A & B
 EWING, NEW JERSEY

FIRST FLOOR PLAN - MECHANICAL

3/2/07
E061110
M101







FLETCHER THOMPSON
ARCHITECTURE ENGINEERING
11-011 DOUGLASS ST
SHARLTON, CT 06489
TEL: (203) 243-4611 FAX: (203) 243-4600

LANGAN ENGINEERING &
ENVIRONMENTAL SERVICES, INC.
BRUSH MOORE CENTER
ELABORADO (MARIANA), NEW PASCIA 60427
TEL: (303) 274-0000 FAX: (303) 274-0001

REGISTRATION NO.
C-0866194

777 NEW HAVEN AVENUE
NEW BRIDGE, NEW JERSEY 08041
800-451-1943 FAX 856-461-2799

N. COLSON DEVELOPMENT SET

about 100,000, with another 50,000 in the

7. *Reference to Comments*

HER HEMPSON

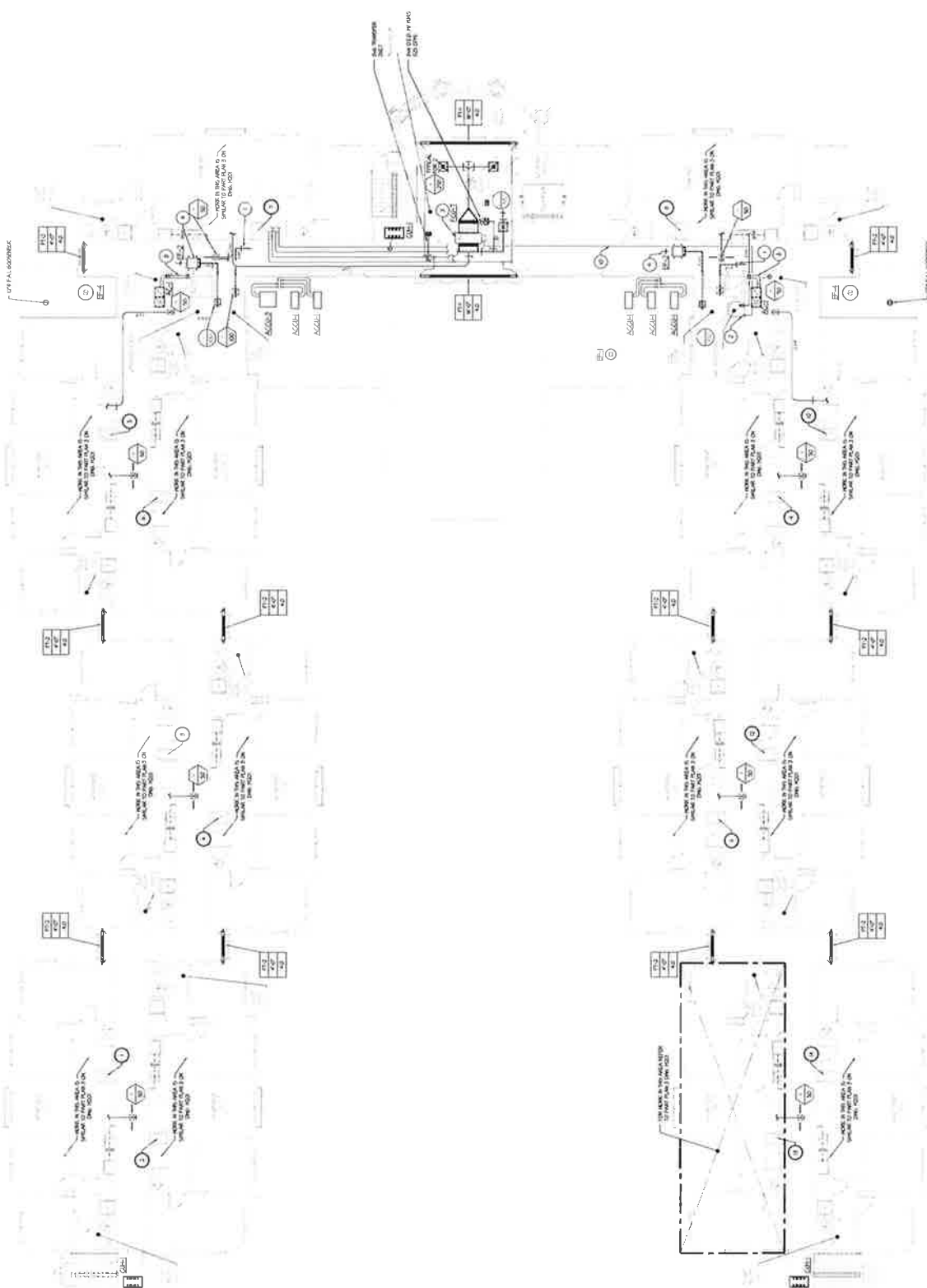
[illegible]THE COLLEGE OF
NEW JERSEY

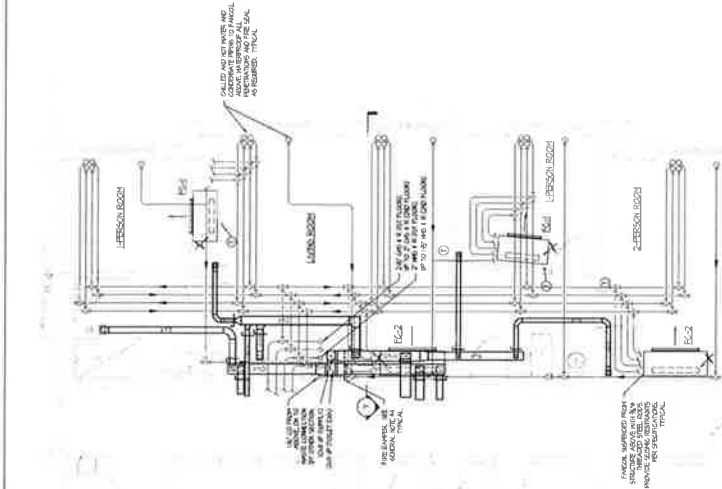
STUDENT APARTMENTS
BUILDINGS A & B
WING, NEW JERSEY

TAINICAL

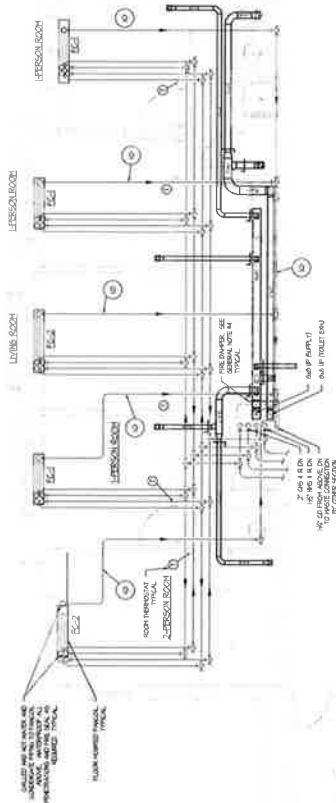
3/2/07

0111603

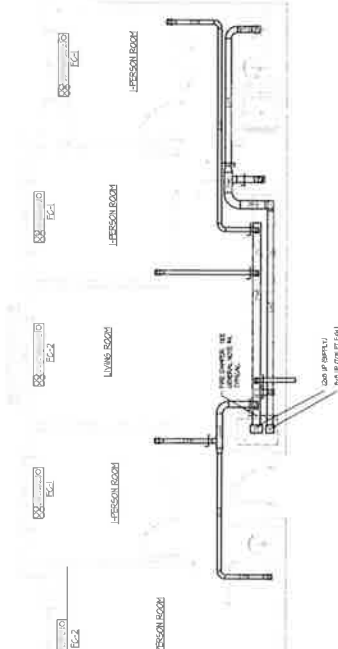




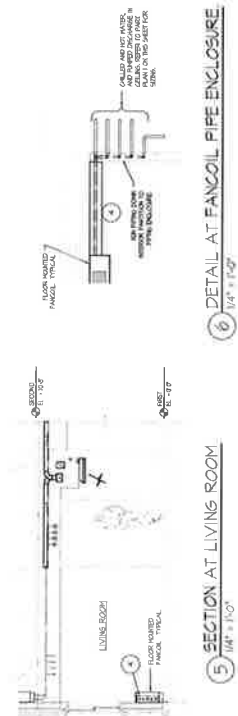
① TYPICAL 5-PERSON SUITE - FIRST FLOOR



2 TYPICAL 5-PERSON SUITE - SECOND FLOOR
1/4" = 1'-0"

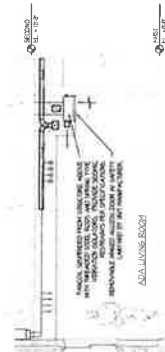


③ TYPICAL 5-PERSON SUITE - THIRD FLOOR
1/4" = 1'-0"

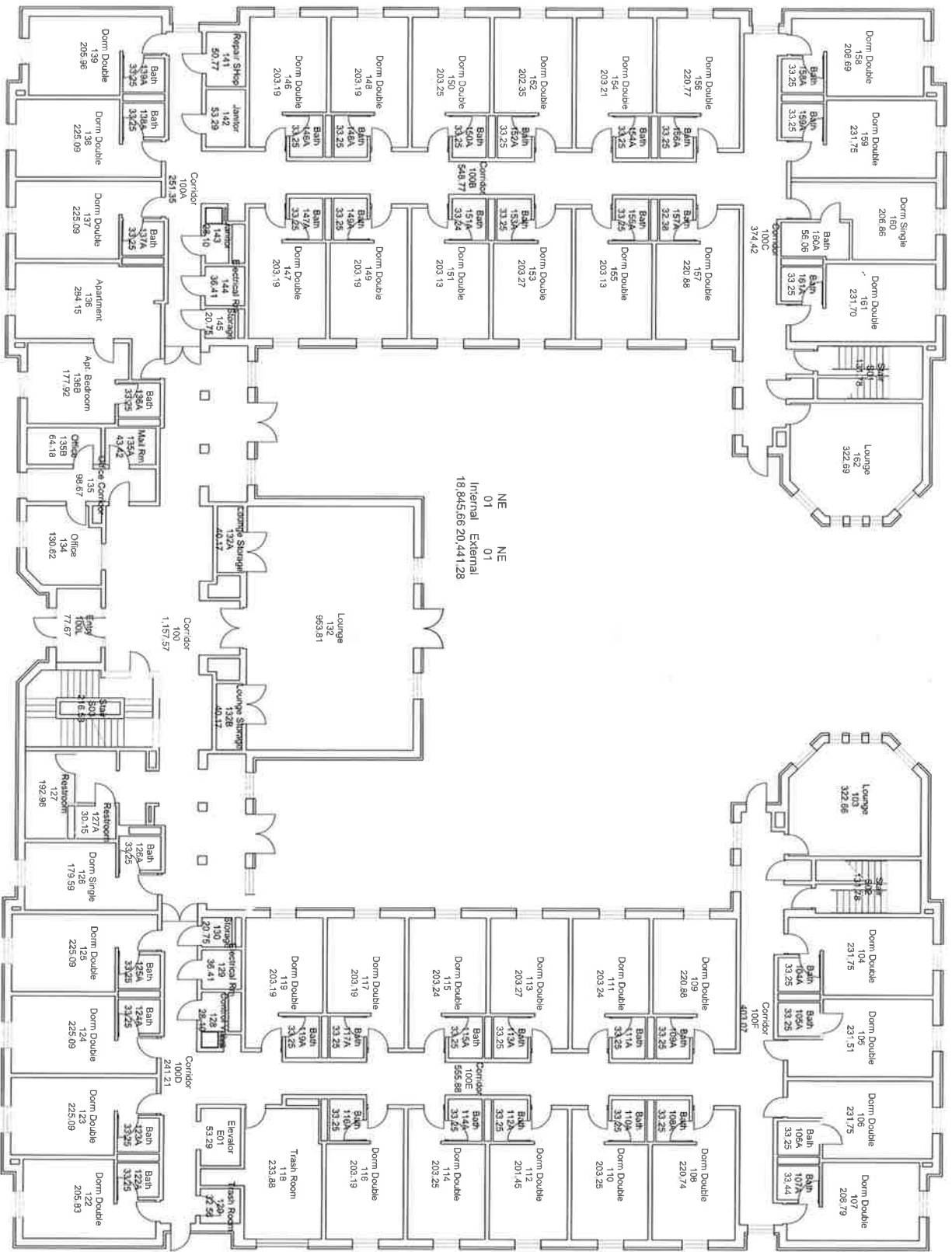


5 SECTION AT LIVING ROOM

6 1/4" x 1 1/2" DETAIL AT FANCOIL PIPE ENCLOSURE



7 SECTION AT ADA LIVING ROOM



NE 01
NE 01
Internal External
18,845.66 20,441.28

NEW RESIDENCE HALL FIRST FLOOR

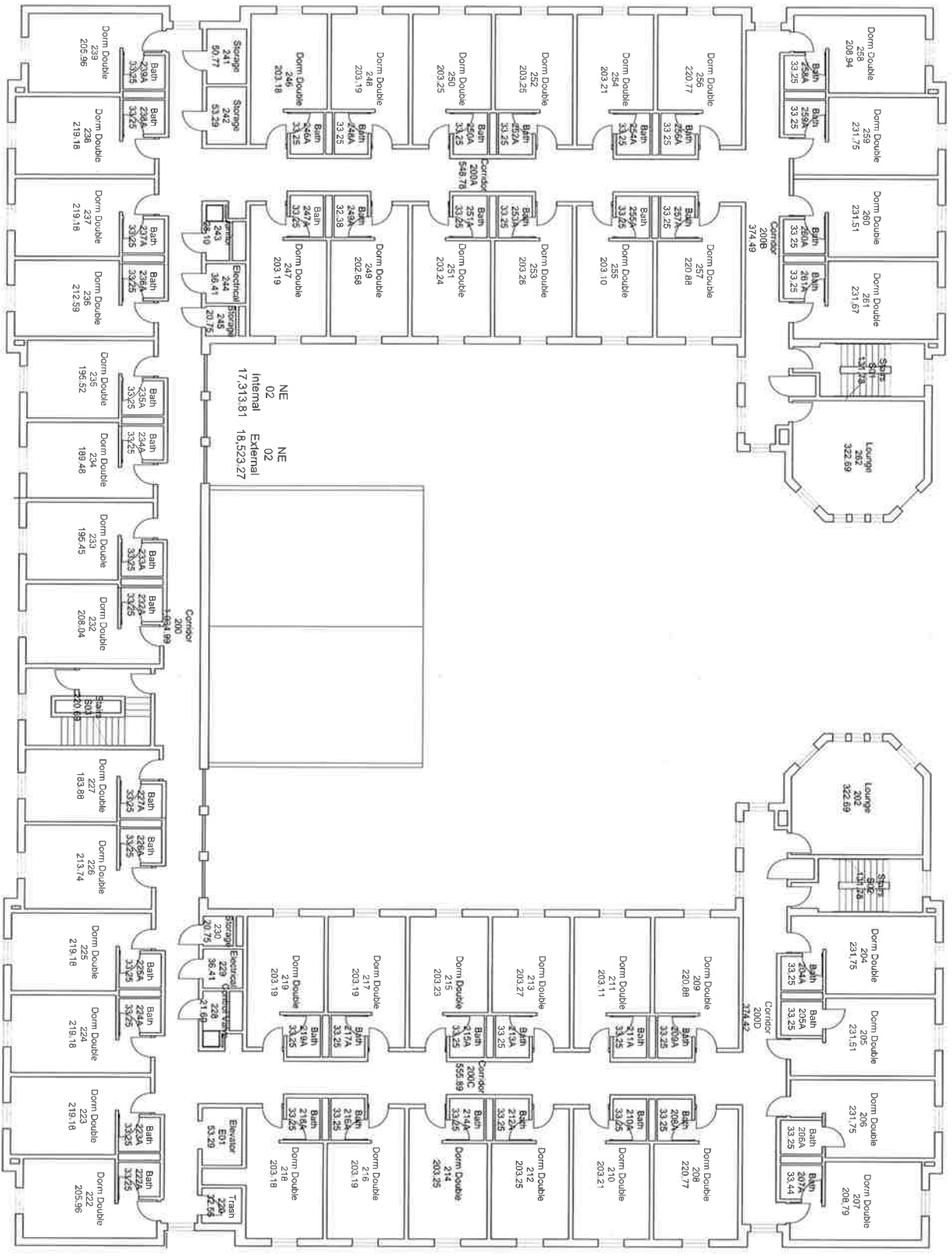


Room by Department

Campus Planning

Revised May 17, 2022

Scale	Not to Scale
Drawn	XX
Approved	XX
Dwg. No.	XXX



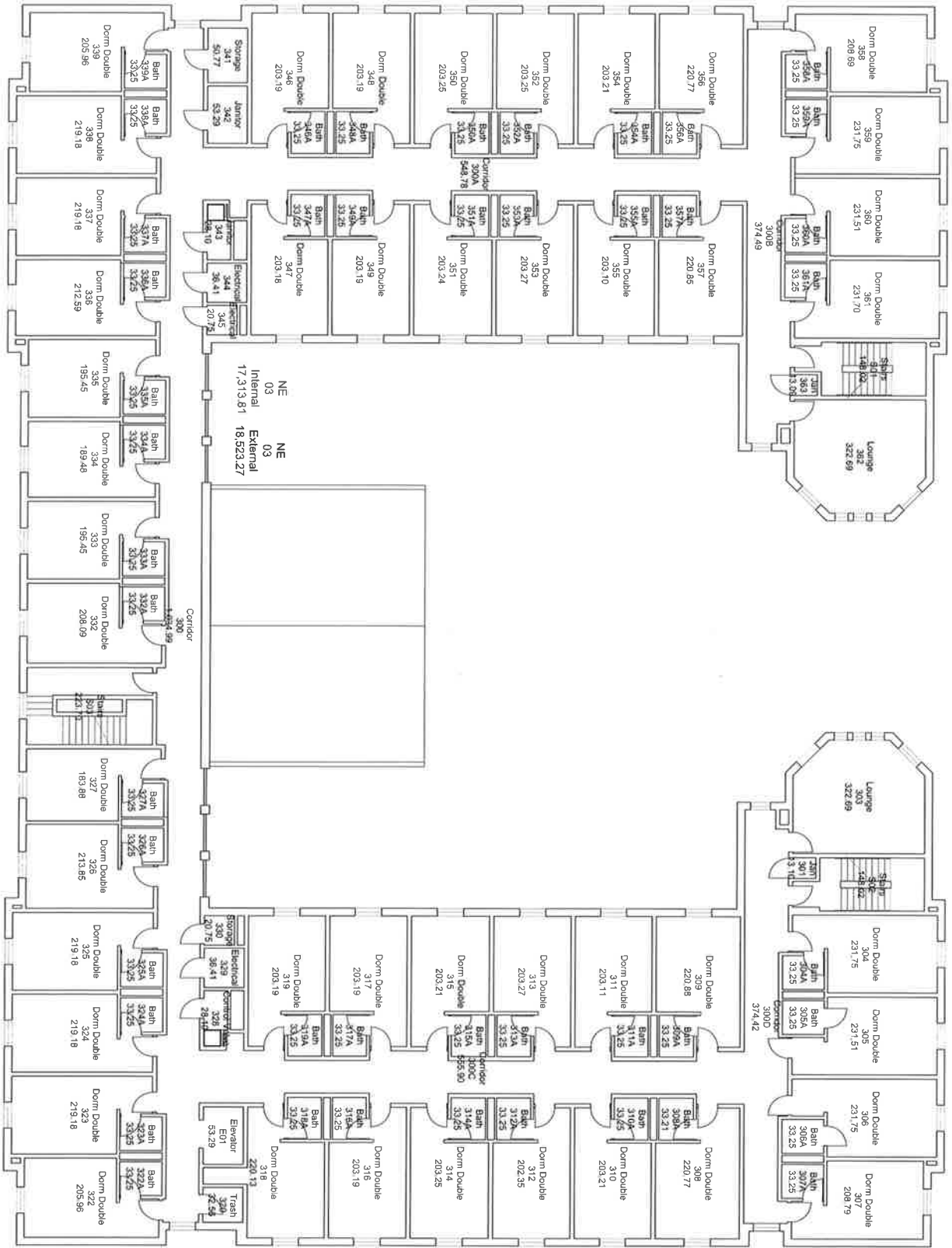
NEW RESIDENCE HALL SECOND FLOOR



Room by Department

Campus Planning

Revised	May 17, 2022
Scale	Not to Scale
Drawn	XX
Approved	XX
Dwg. No.	XXX



NEW RESIDENCE HALL THIRD FLOOR



Room by Department

Campus Planning

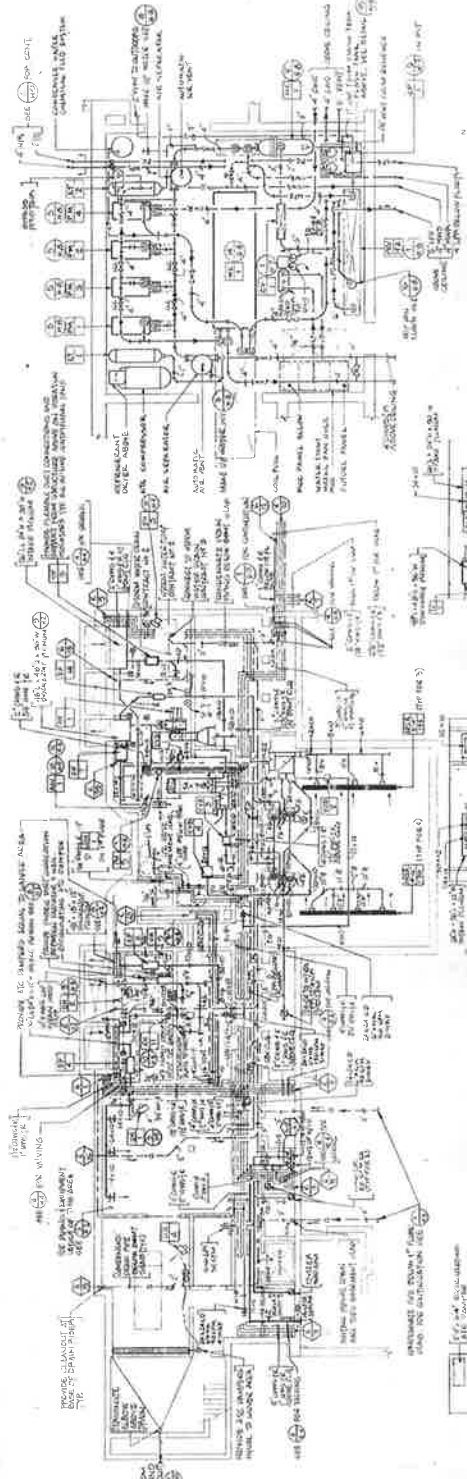
Revised May 16, 2022

Scale Not to Scale

Drawn XX

Approved XX

Dwg. No. XXX



2 MECHANICAL ROOM PLAN
 SCALE: 1/8" = 1'-0"

1 BASEMENT FLOOR PLAN
 SCALE: 1/8" = 1'-0"

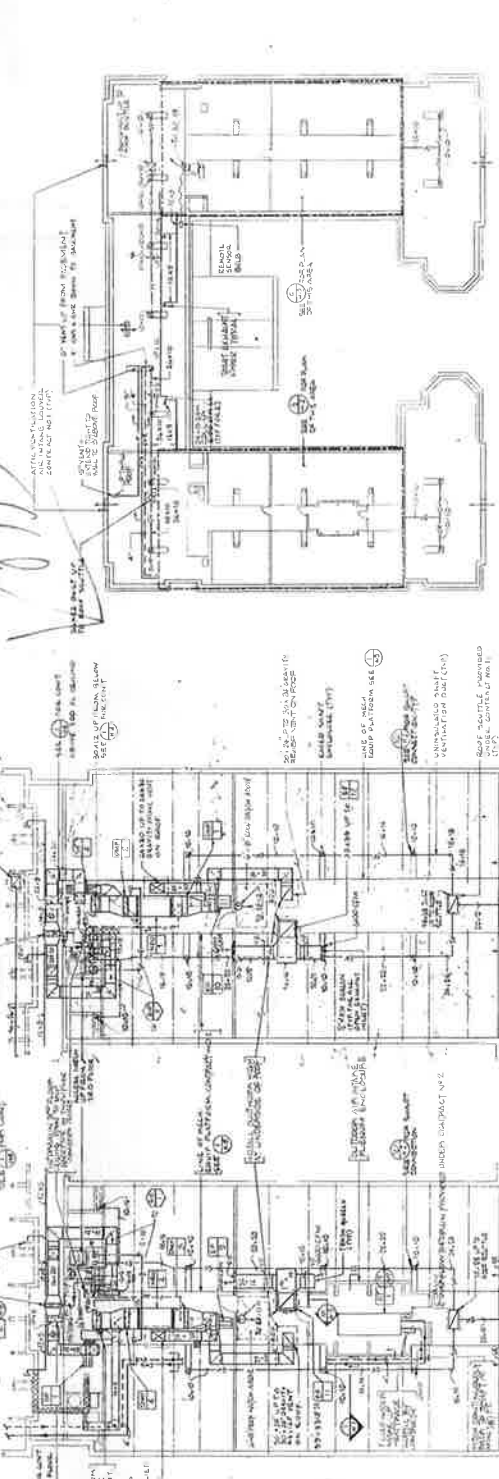
7 GENERATOR ROOM ELEVATION: EAST WALL
 SCALE: 1/8" = 1'-0"

9 MECH. RM. B-1 LOWER ELEVATIONS
 SCALE: 1/8" = 1'-0"

8 MECH. RM. B-109 LOWER ELEVATIONS
 SCALE: 1/8" = 1'-0"

4 EAST WING PARTIAL ATTIC PLAN
 SCALE: 1/8" = 1'-0"

3 WEST WING PARTIAL ATTIC PLAN
 SCALE: 1/8" = 1'-0"

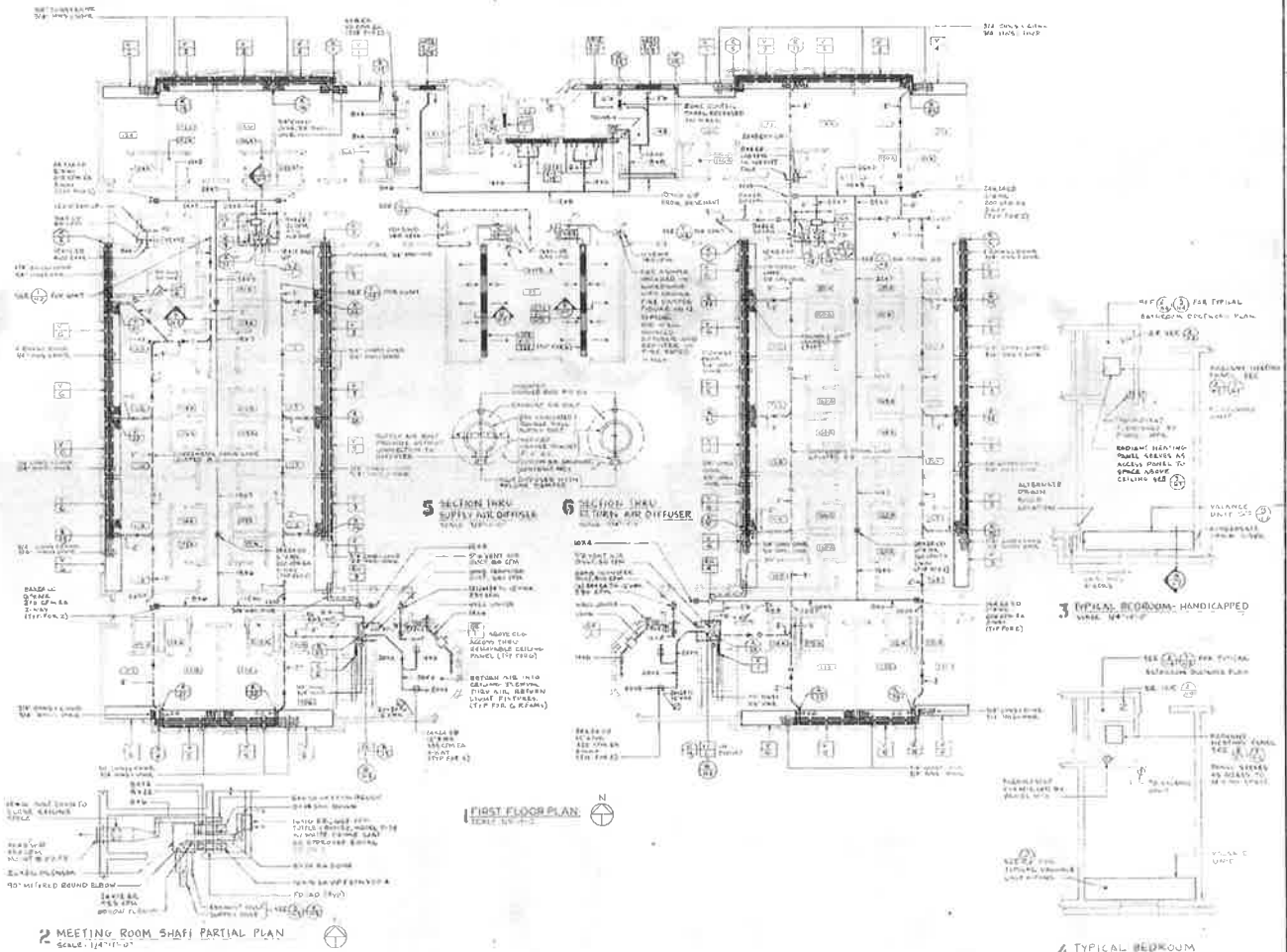


5 ATTIC PLAN
 SCALE: 1/8" = 1'-0"

10 TYPICAL SHAFT VENTILATION DETAIL
 SCALE: 1/8" = 1'-0"

4 EAST WING PARTIAL ATTIC PLAN
 SCALE: 1/8" = 1'-0"

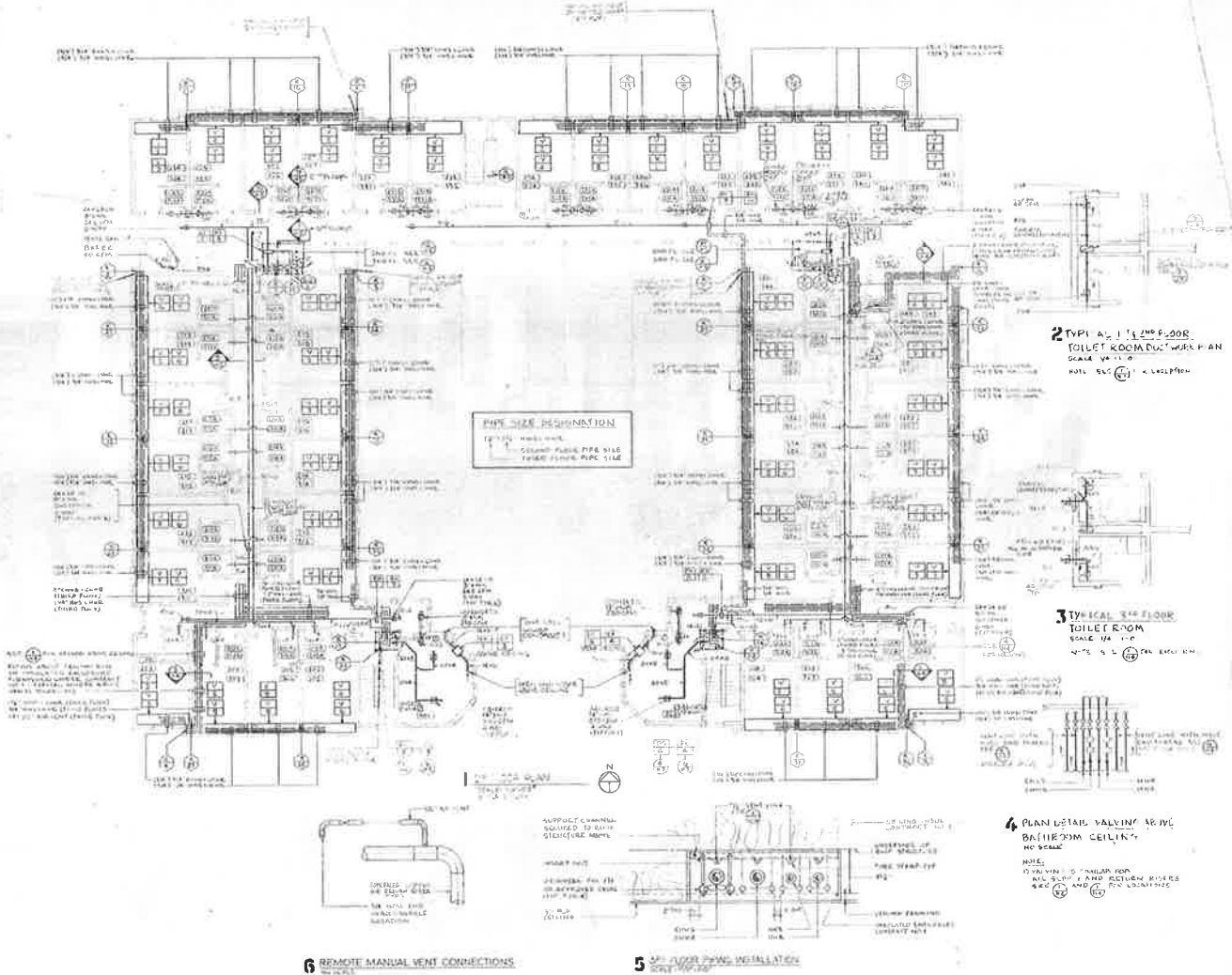
3 WEST WING PARTIAL ATTIC PLAN
 SCALE: 1/8" = 1'-0"

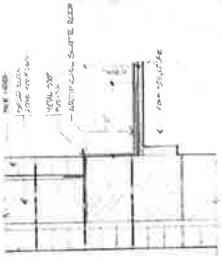


16 AUGUST, 1983

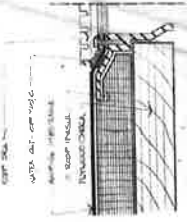
DB MG
 FIRST FLOOR PLAN
 HVAC

H3

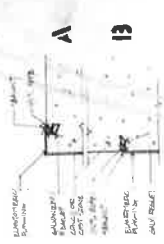




12 DETAIL
ROOF DRAIN



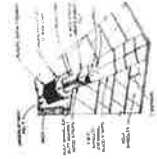
13 DETAIL
TYPICAL ROOF DRAIN/FLASHING



14 A/B DETAIL
TYPICAL ROOF DRAIN/FLASHING



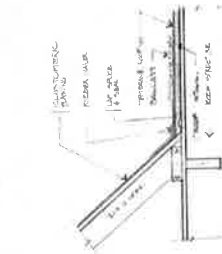
15 DETAIL
CRACKS WALL FLASHING



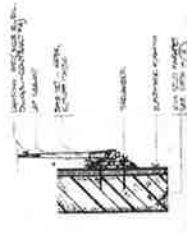
16 DETAIL
HIDENGE ART. WALL FLASHING



17 DETAIL
OPEN VALLEY FLASHING



7 DETAIL
ROOF EDGE FLASHING



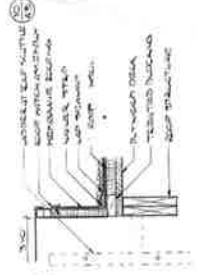
8 DETAIL
ROOF EDGE FLASHING



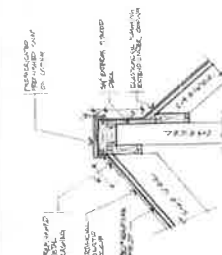
9 A/B DETAIL
ROOF EDGE FLASHING



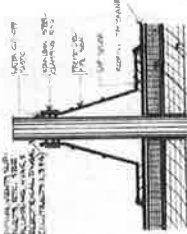
10 DETAIL
ROOF EDGE FLASHING



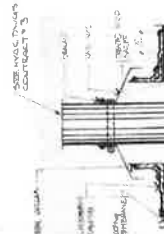
11 DETAIL
ROOF EDGE FLASHING



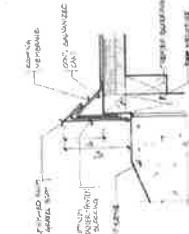
2 DETAIL
ROOF EDGE FLASHING



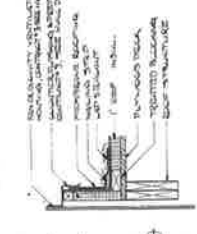
3 DETAIL
ROOF EDGE FLASHING



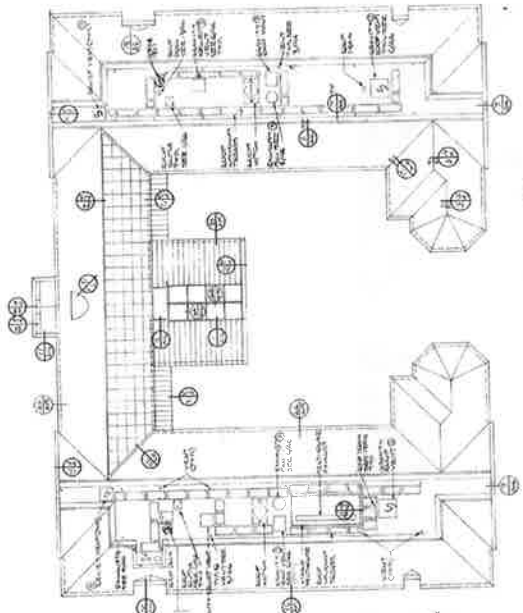
4 DETAIL
ROOF EDGE FLASHING



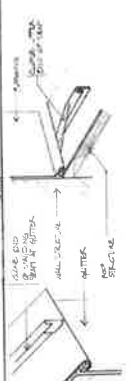
5 DETAIL
ROOF EDGE FLASHING



6 DETAIL
ROOF EDGE FLASHING



1 ROOF PLAN



24 A DETAIL
COPING DETAILS

24 B DETAIL
COPING DETAILS

24 C DETAIL
COPING DETAILS

24 D DETAIL
COPING DETAILS

24 E DETAIL
COPING DETAILS

24 F DETAIL
COPING DETAILS

24 G DETAIL
COPING DETAILS

24 H DETAIL
COPING DETAILS

24 I DETAIL
COPING DETAILS

24 J DETAIL
COPING DETAILS

24 K DETAIL
COPING DETAILS

24 L DETAIL
COPING DETAILS

24 M DETAIL
COPING DETAILS

24 N DETAIL
COPING DETAILS

24 O DETAIL
COPING DETAILS

24 P DETAIL
COPING DETAILS

24 Q DETAIL
COPING DETAILS

24 R DETAIL
COPING DETAILS

24 S DETAIL
COPING DETAILS

24 T DETAIL
COPING DETAILS

24 U DETAIL
COPING DETAILS

24 V DETAIL
COPING DETAILS



18 DETAIL
GUTTER



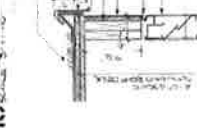
19 DETAIL
GUTTER



20 DETAIL
RAISED ROOF EDGE



21 DETAIL
PENTHOUSE BASE



22 DETAIL
VALLEY

23 DETAIL
VALLEY

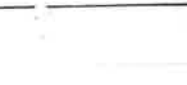
24 DETAIL
VALLEY

25 DETAIL
VALLEY

26 DETAIL
VALLEY



27 DETAIL
OPEN VALLEY FLASHING



28 DETAIL
OPEN VALLEY FLASHING



29 DETAIL
OPEN VALLEY FLASHING



30 DETAIL
OPEN VALLEY FLASHING



31 DETAIL
OPEN VALLEY FLASHING

32 DETAIL
OPEN VALLEY FLASHING

33 DETAIL
OPEN VALLEY FLASHING

34 DETAIL
OPEN VALLEY FLASHING



**PACKER HALL
FIRST FLOOR, Part A**



Room by Department

Campus Planning

Revised	Feb 28, 2022
Scale	Not to Scale
Drawn	XX
Approved	XX
Dwg. No.	XXX

[illegible]

TCNJ
THE COLLEGE OF
NEW JERSEY

Campus Planning

Revised	May 14, 2021
Scale	Not to Scale
Drawn	<u>XX</u>
Approved	<u>XX</u>
Dwg. No.	<u>XXX</u>

Handwritten signature
 JOHN L. GARDNER, P.E.

ARCHITECT OF RECORD
 ARTHUR J. THAYER, Principal
 1000 North 1st Street
 Phoenix, Arizona 85004
 (602) 254-1111

DESIGN ARCHITECT
 JAMES J. GARDNER, Principal
 1000 North 1st Street
 Phoenix, Arizona 85004
 (602) 254-1111

M/E/P CONSULTANTS
 JAMES J. GARDNER, Principal
 1000 North 1st Street
 Phoenix, Arizona 85004
 (602) 254-1111

STRUCTURAL CONSULTANTS
 JAMES J. GARDNER, Principal
 1000 North 1st Street
 Phoenix, Arizona 85004
 (602) 254-1111

LANDSCAPE CONSULTANTS
 JAMES J. GARDNER, Principal
 1000 North 1st Street
 Phoenix, Arizona 85004
 (602) 254-1111

CONSTRUCTION MANAGER
 JAMES J. GARDNER, Principal
 1000 North 1st Street
 Phoenix, Arizona 85004
 (602) 254-1111

TRIMBLE STATE COLLEGE
 1000 North 1st Street
 Phoenix, Arizona 85004
 (602) 254-1111

CAMPUS PLANNING AND CONSTRUCTION
 JAMES J. GARDNER, Principal
 1000 North 1st Street
 Phoenix, Arizona 85004
 (602) 254-1111

TRIMBLE STATE COLLEGE
 1000 North 1st Street
 Phoenix, Arizona 85004
 (602) 254-1111

CAMPUS PLANNING AND CONSTRUCTION
 JAMES J. GARDNER, Principal
 1000 North 1st Street
 Phoenix, Arizona 85004
 (602) 254-1111

TRIMBLE STATE COLLEGE
 1000 North 1st Street
 Phoenix, Arizona 85004
 (602) 254-1111

CAMPUS PLANNING AND CONSTRUCTION
 JAMES J. GARDNER, Principal
 1000 North 1st Street
 Phoenix, Arizona 85004
 (602) 254-1111

TRIMBLE STATE COLLEGE
 1000 North 1st Street
 Phoenix, Arizona 85004
 (602) 254-1111

CAMPUS PLANNING AND CONSTRUCTION
 JAMES J. GARDNER, Principal
 1000 North 1st Street
 Phoenix, Arizona 85004
 (602) 254-1111

TRIMBLE STATE COLLEGE
 1000 North 1st Street
 Phoenix, Arizona 85004
 (602) 254-1111

CAMPUS PLANNING AND CONSTRUCTION
 JAMES J. GARDNER, Principal
 1000 North 1st Street
 Phoenix, Arizona 85004
 (602) 254-1111

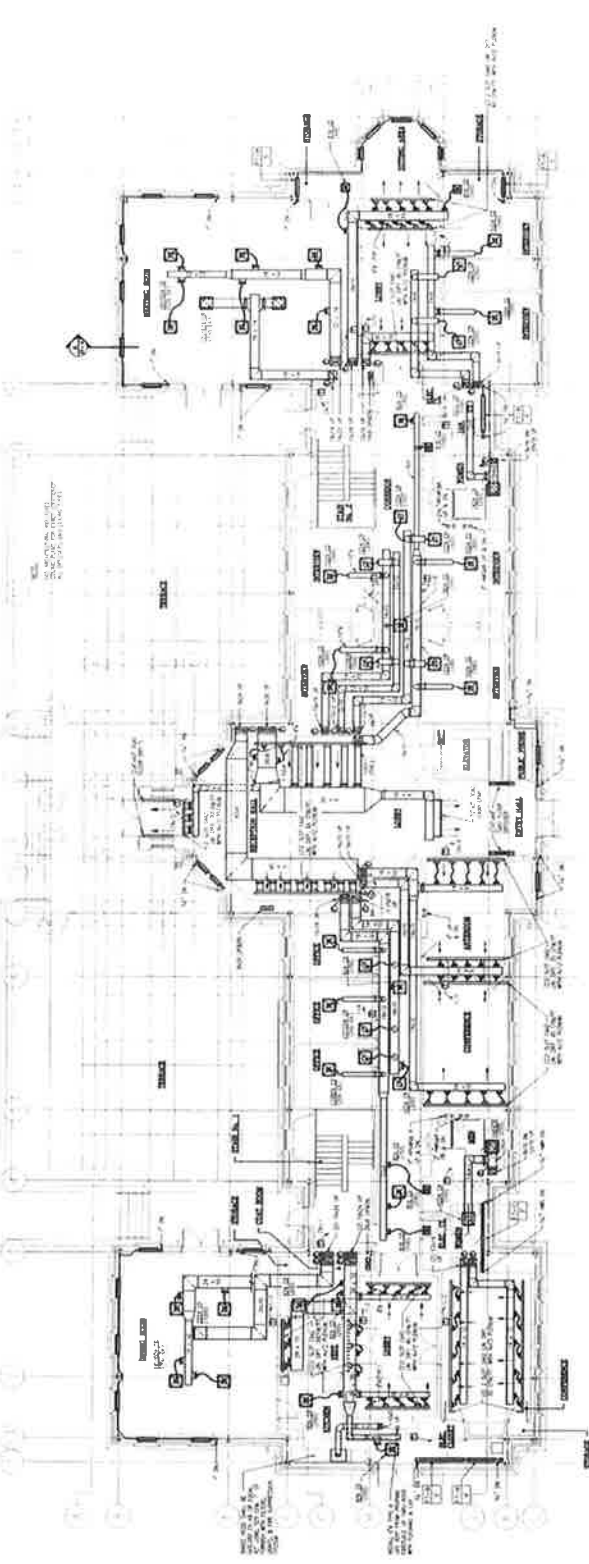
TRIMBLE STATE COLLEGE
 1000 North 1st Street
 Phoenix, Arizona 85004
 (602) 254-1111

CAMPUS PLANNING AND CONSTRUCTION
 JAMES J. GARDNER, Principal
 1000 North 1st Street
 Phoenix, Arizona 85004
 (602) 254-1111

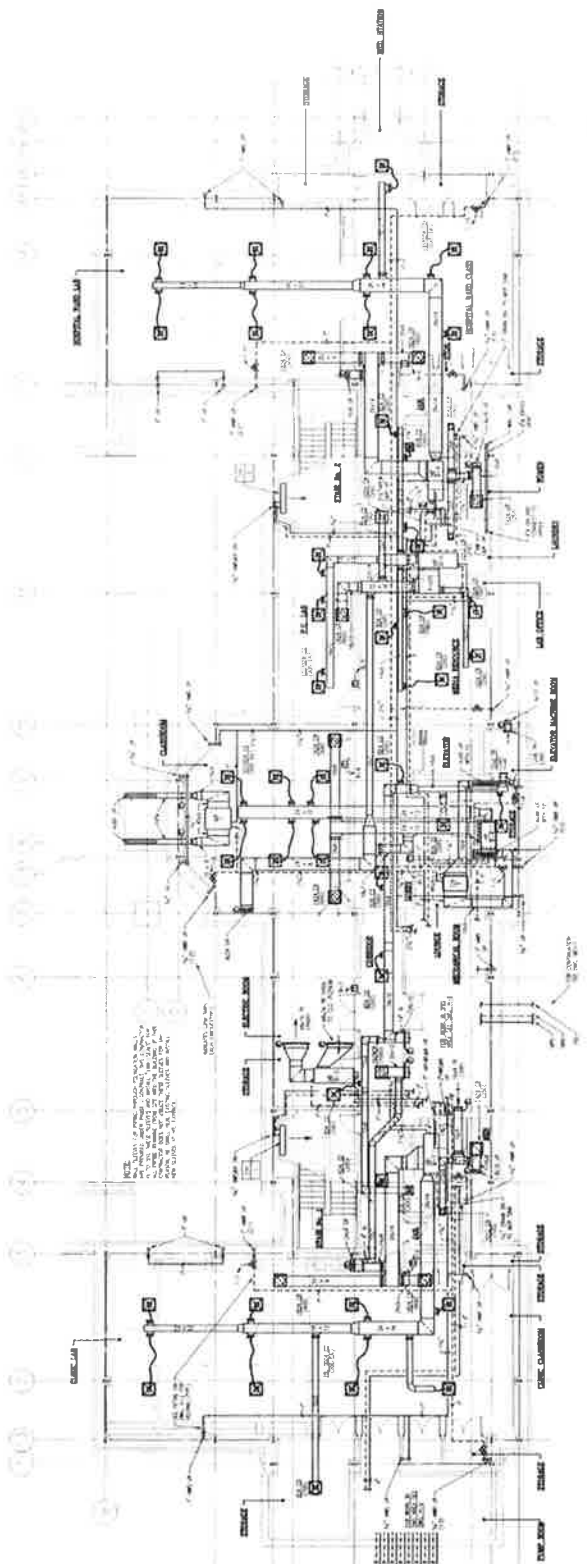
TRIMBLE STATE COLLEGE
 1000 North 1st Street
 Phoenix, Arizona 85004
 (602) 254-1111

CAMPUS PLANNING AND CONSTRUCTION
 JAMES J. GARDNER, Principal
 1000 North 1st Street
 Phoenix, Arizona 85004
 (602) 254-1111

TRIMBLE STATE COLLEGE
 1000 North 1st Street
 Phoenix, Arizona 85004
 (602) 254-1111



H.V.A.C. - FIRST FLOOR PLAN
 SCALE: 1/8" = 1'-0"



H.V.A.C. - BASEMENT FLOOR PLAN
 SCALE: 1/8" = 1'-0"

TRIMBLE STATE COLLEGE
 1000 North 1st Street
 Phoenix, Arizona 85004
 (602) 254-1111

CAMPUS PLANNING AND CONSTRUCTION
 JAMES J. GARDNER, Principal
 1000 North 1st Street
 Phoenix, Arizona 85004
 (602) 254-1111

TRIMBLE STATE COLLEGE
 1000 North 1st Street
 Phoenix, Arizona 85004
 (602) 254-1111

CAMPUS PLANNING AND CONSTRUCTION
 JAMES J. GARDNER, Principal
 1000 North 1st Street
 Phoenix, Arizona 85004
 (602) 254-1111

TRIMBLE STATE COLLEGE
 1000 North 1st Street
 Phoenix, Arizona 85004
 (602) 254-1111