

**To: All Vendors Bidding on The College of New Jersey  
Residence Halls Duct Cleaning**

**From: Anup Kapur  
Finance & Business Services**

**Date: March 7, 2022**

---

**ADDENDUM NO. 1**

**ISSUE DATE: March 7, 2022**

**REFERENCE:** The College of New Jersey  
Residence Halls Duct Cleaning  
Project No. AB220028

Date of Original Bidding Documents: February 21, 2022

**INTENT:** This Addendum forms a part of the Contract Documents and modifies the original Bidding Documents and Prior Addenda if any, as identified above. Acknowledge receipt of this Addendum in the space provided on the Bid Form. Failure to do so may subject Bidder to disqualification.

**TCNJ Clarification:**

Scope being added to this project as follows:

**Travers/Wolfe Hall** – clean bathroom exhaust vents/ductwork and student room unit ventilators. 10 story Residence Hall with 4 shared bathrooms per floor. Architectural floor plans attached.

- 2 single bathrooms on 1<sup>st</sup> floor in two resident director suites.
- 510-unit ventilators within student dorm rooms.
- Exhaust fans and ductwork from 1<sup>st</sup> floor to roof.
- 6 rooftop exhaust fans.

Buildings are to be completed in the following order:

1. Ely/Allen/Brewster Hall
2. Norsworthy Hall
3. Phelps Hall
4. Centennial Hall
5. Travers/Wolfe Hall
6. Decker Hall
7. Cromwell Hall
8. Townhouse South
9. New Residence Hall



**TCNJ Scope of Work Eliminated:**

All duct cleaning scope related to Eickhoff Hall and Hausdoerfer Hall has been removed from this bid.

**Vendor Questions:**

1. Incidental work - What if 15LF ductwork?

TCNJ Response: Indicate what the cost would be to clean and sanitize 15 LF of ductwork.

2. Drawing M.1 “multifamily” drawing, Fan coil- What building is this for?

TCNJ Response: Drawing M.1 is related to the Townhouse South Complex. The drawing shows a typical unit and there are 24 units in total.

3. In the bid document, it is missing drawing for Phelps Hall and Hausdoerfer Hall.

TCNJ Response: Please refer to attached drawings M101, M102, M103, M104 and M201 (Student Apartments). These drawings are for Phelps Hall. Hausdoerfer Hall scope of work has been removed from this bid.

4. Do you have to scale drawings?

TCNJ Response: Drawings are not to scale and are diagrammatic only.

**Attachments:**

1. Pre-bid Signup sheet - N/A
2. M101
3. M102
4. M103
5. M104
6. M201
7. Travers/Wolfe Hall Floor Plans Floors 1 thru 10.
8. Updated Bid sheet and Unit pricing sheet.

**END OF ADDENDUM NO. 1**



Bid Sheet

Company Name \_\_\_\_\_

Lump sum price per residence hall based on scope above:

Residence Hall	Price
1. Cromwell Hall	
2. Ely-Allen-Brewster Hall	
3. Norsworthy Hall	
4. New Residence Hall	
5. Townhouse South Complex	
6. Centennial Hall	
7. Decker Hall	
8. Phelps Hall	
9. Travers/Wolfe Hall	
<b>Total</b>	

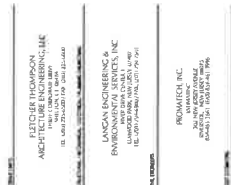
In addition to the base quote for each dorm, please provide the following Unit Rates for incidental work.

Item	Price
A. 1 Supply/ Return/ Exhaust register	
B. 1 Exhaust Fan	
C. 15 LF ductwork cleaning and sanitizing	
D. 1 Duct Access, Cut and Repair	
E. 1 Heat recovery unit	
F. 1 AHU	
G. 1 Fan Coil	









DCA REVIEW N. 00000000N 7-00-07

Activity	Frequency	Duration	Intensity	Notes
Walking	30 min	30 min	Low	
Swimming	30 min	30 min	Low	
Yoga	30 min	30 min	Low	
Reading	30 min	30 min	Low	
Listening to music	30 min	30 min	Low	
Watching TV	30 min	30 min	Low	
Working	30 min	30 min	Low	
Studying	30 min	30 min	Low	
Exercise	30 min	30 min	Low	
Relaxation	30 min	30 min	Low	
Meal preparation	30 min	30 min	Low	
Housework	30 min	30 min	Low	
Childcare	30 min	30 min	Low	
Commuting	30 min	30 min	Low	
Shopping	30 min	30 min	Low	
Personal care	30 min	30 min	Low	
Education	30 min	30 min	Low	
Healthcare	30 min	30 min	Low	
Volunteering	30 min	30 min	Low	
Traveling	30 min	30 min	Low	
Socializing	30 min	30 min	Low	
Working	30 min	30 min	Low	
Studying	30 min	30 min	Low	
Exercise	30 min	30 min	Low	
Relaxation	30 min	30 min	Low	
Meal preparation	30 min	30 min	Low	
Housework	30 min	30 min	Low	
Childcare	30 min	30 min	Low	
Commuting	30 min	30 min	Low	
Shopping	30 min	30 min	Low	
Personal care	30 min	30 min	Low	
Education	30 min	30 min	Low	
Healthcare	30 min	30 min	Low	
Volunteering	30 min	30 min	Low	
Traveling	30 min	30 min	Low	
Socializing	30 min	30 min	Low	
Working	30 min	30 min	Low	
Studying	30 min	30 min	Low	
Exercise	30 min	30 min	Low	
Relaxation	30 min	30 min	Low	
Meal preparation	30 min	30 min	Low	
Housework	30 min	30 min	Low	
Childcare	30 min	30 min	Low	
Commuting	30 min	30 min	Low	
Shopping	30 min	30 min	Low	
Personal care	30 min	30 min	Low	
Education	30 min	30 min	Low	
Healthcare	30 min	30 min	Low	
Volunteering	30 min	30 min	Low	
Traveling	30 min	30 min	Low	
Socializing	30 min	30 min	Low	
Working	30 min	30 min	Low	
Studying	30 min	30 min	Low	
Exercise	30 min	30 min	Low	
Relaxation	30 min	30 min	Low	
Meal preparation	30 min	30 min	Low	
Housework	30 min	30 min	Low	
Childcare	30 min	30 min	Low	
Commuting	30 min	30 min	Low	
Shopping	30 min	30 min	Low	
Personal care	30 min	30 min	Low	
Education	30 min	30 min	Low	
Healthcare	30 min	30 min	Low	
Volunteering	30 min	30 min	Low	
Traveling	30 min	30 min	Low	
Socializing	30 min	30 min	Low	
Working	30 min	30 min	Low	
Studying	30 min	30 min	Low	
Exercise	30 min	30 min	Low	
Relaxation	30 min	30 min	Low	
Meal preparation	30 min	30 min	Low	
Housework	30 min	30 min	Low	
Childcare	30 min	30 min	Low	
Commuting	30 min	30 min	Low	
Shopping	30 min	30 min	Low	
Personal care	30 min	30 min	Low	
Education	30 min	30 min	Low	
Healthcare	30 min	30 min	Low	
Volunteering	30 min	30 min	Low	
Traveling	30 min	30 min	Low	
Socializing	30 min	30 min	Low	
Working	30 min	30 min	Low	
Studying	30 min	30 min	Low	
Exercise	30 min	30 min	Low	
Relaxation	30 min	30 min	Low	
Meal preparation	30 min	30 min	Low	
Housework	30 min	30 min	Low	
Childcare	30 min	30 min	Low	
Commuting	30 min	30 min	Low	
Shopping	30 min	30 min	Low	

**FLETCHER THOMPSON**  
ARCHITECTURE ENGINEERING, L.L.C.  
ONE IOWA CENTER BUILDING  
EAST RIVERSIDE NEW JERSEY 08076  
INDEPENDENCE NEW JERSEY 08059

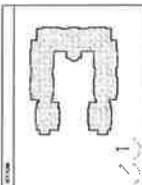
THE COLLEGE OF  
NEW JERSEY

STUDENT APARTMENTS  
BUILDINGS A & B  
EWING, NEW JERSEY

## SECOND FLOOR PLAN - MECHANICAL

10/19/07





FLETCHER THOMPSON  
ARCHITECTURE ENGINEERING, LLC  
1000 COMBELLT LANE  
SUITE 100, C-2 OMAHA  
NE 68101-2752  
TEL: 402-272-6500 FAX: 402-272-6502

**LANGRISH ENVIRONMENTAL SERVICES, INC.**  
 8001 E. 10TH AVENUE  
 LAWRENCE, KS 66044-3202  
 TEL: 913/744-8800 FAX: 913/744-7513

**PROMATECH, INC.**  
 10000 W. 10TH AVENUE  
 LAWRENCE, KS 66044-3202  
 TEL: 913/744-8800 FAX: 913/744-7513

**TABLE 1**

THOMAS A. FANTAZINI, ALA. N. 11 C. 013

CONTRACT NUMBER	THOMAS A. FANTAUZZO
DATE OF AWARD	11 NOVEMBER 1977
DATE OF COMPLETION	11 NOVEMBER 1977

**FLETCHER THOMPSON**  
FLETCHER THOMPSON  
ARCHITECTURE ENGINEERING, LLC  
241 IOWA CENTER BOULEVARD  
LAST BOWLING GREEN, NEW JERSEY 08819  
PHONE: 732-266-7661 FAX: 732-266-9600

THE COLLEGE OF  
NEW JERSEY

### THIRD FLOOR PLAN - MECHANICAL

10/19/07

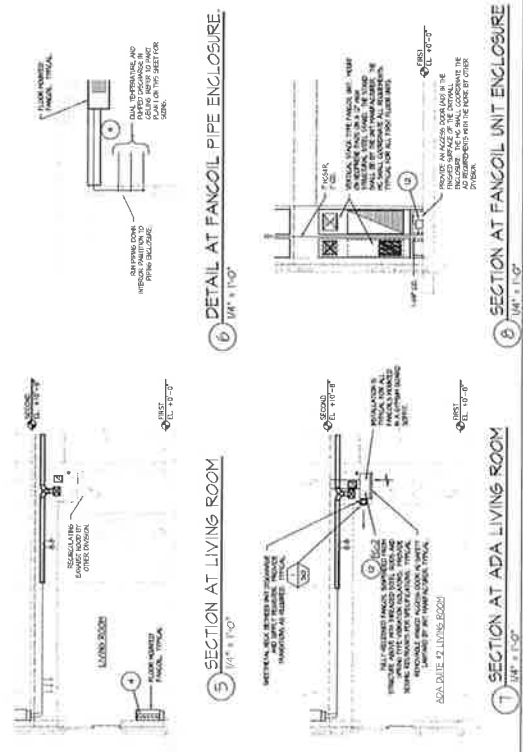
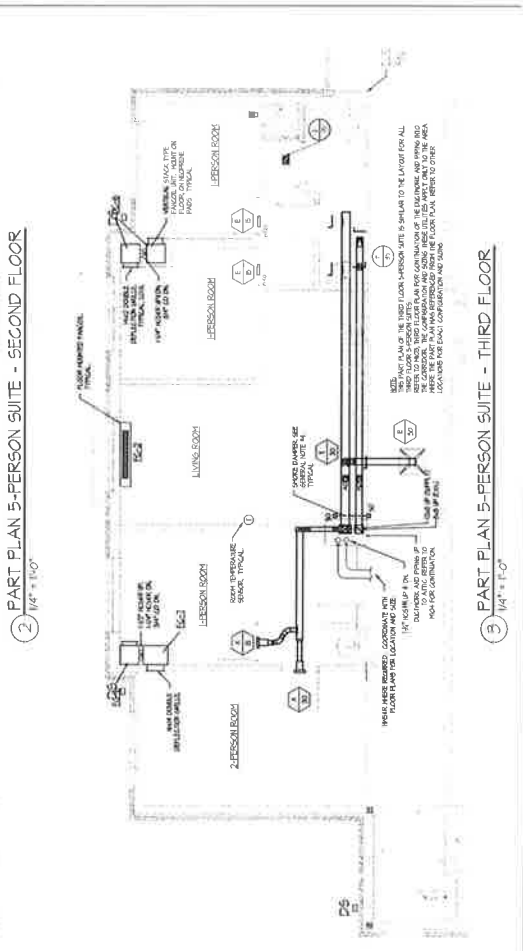
E061110

M103





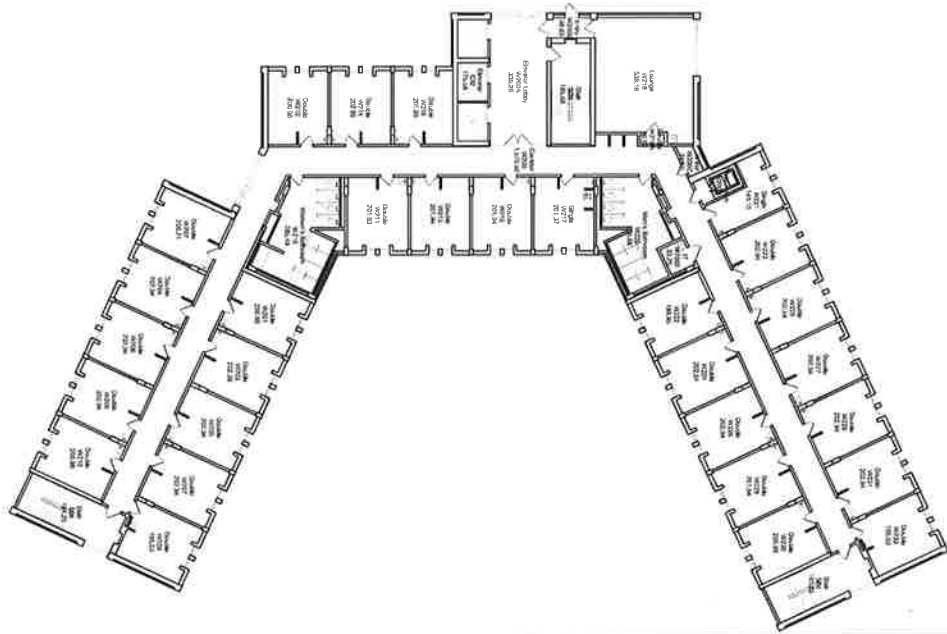
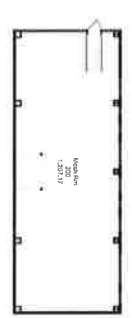
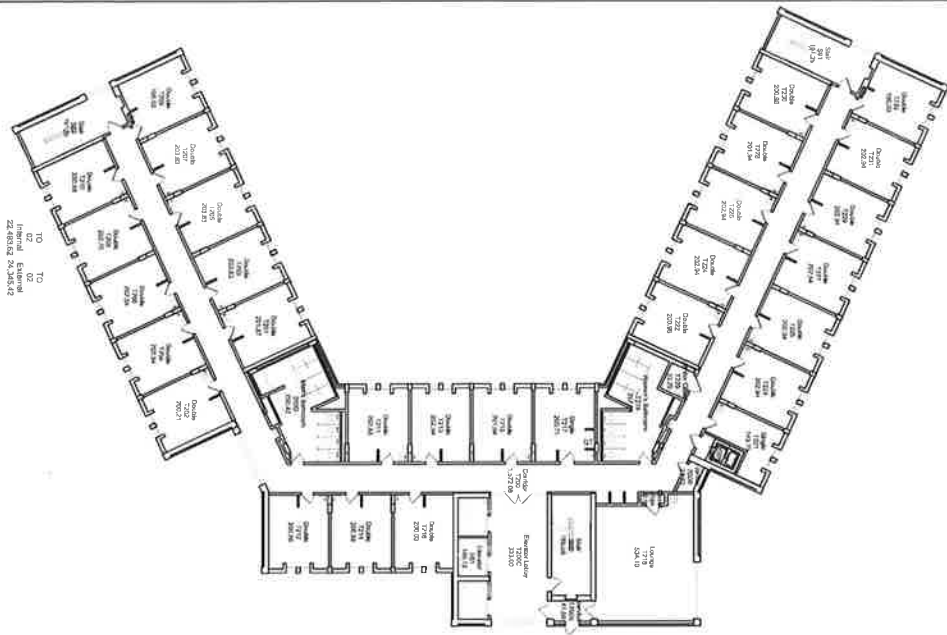












# TRAVERS & WOLFE HALL SECOND FLOOR

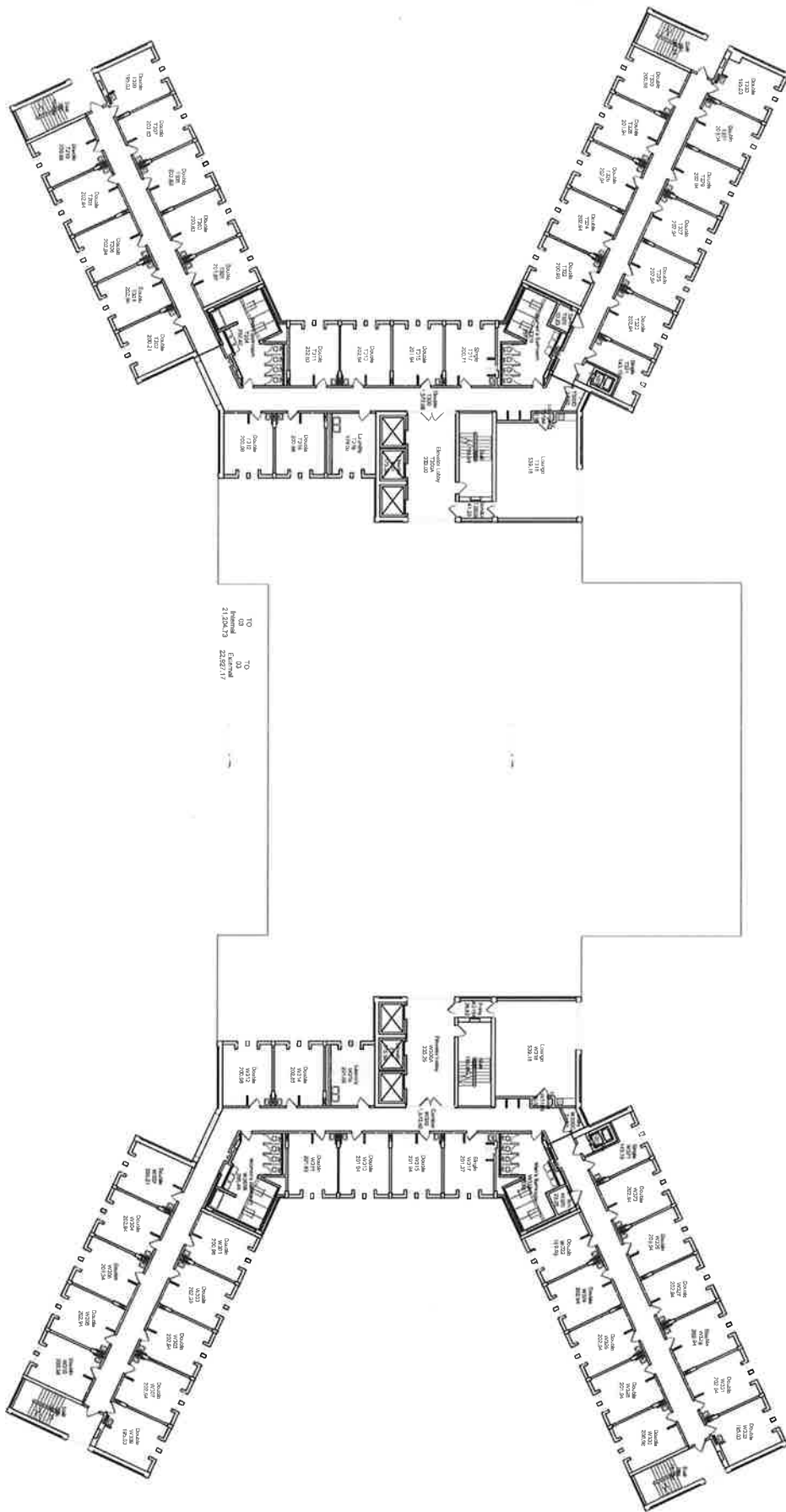


## Room by Department

Campus Planning

Revised	January 24, 2022
Scale	Not to Scale
Drawn	XX
Approved	XX
Dwg. No.	XXX





# TRAVERS & WOLFE HALL THIRD FLOOR

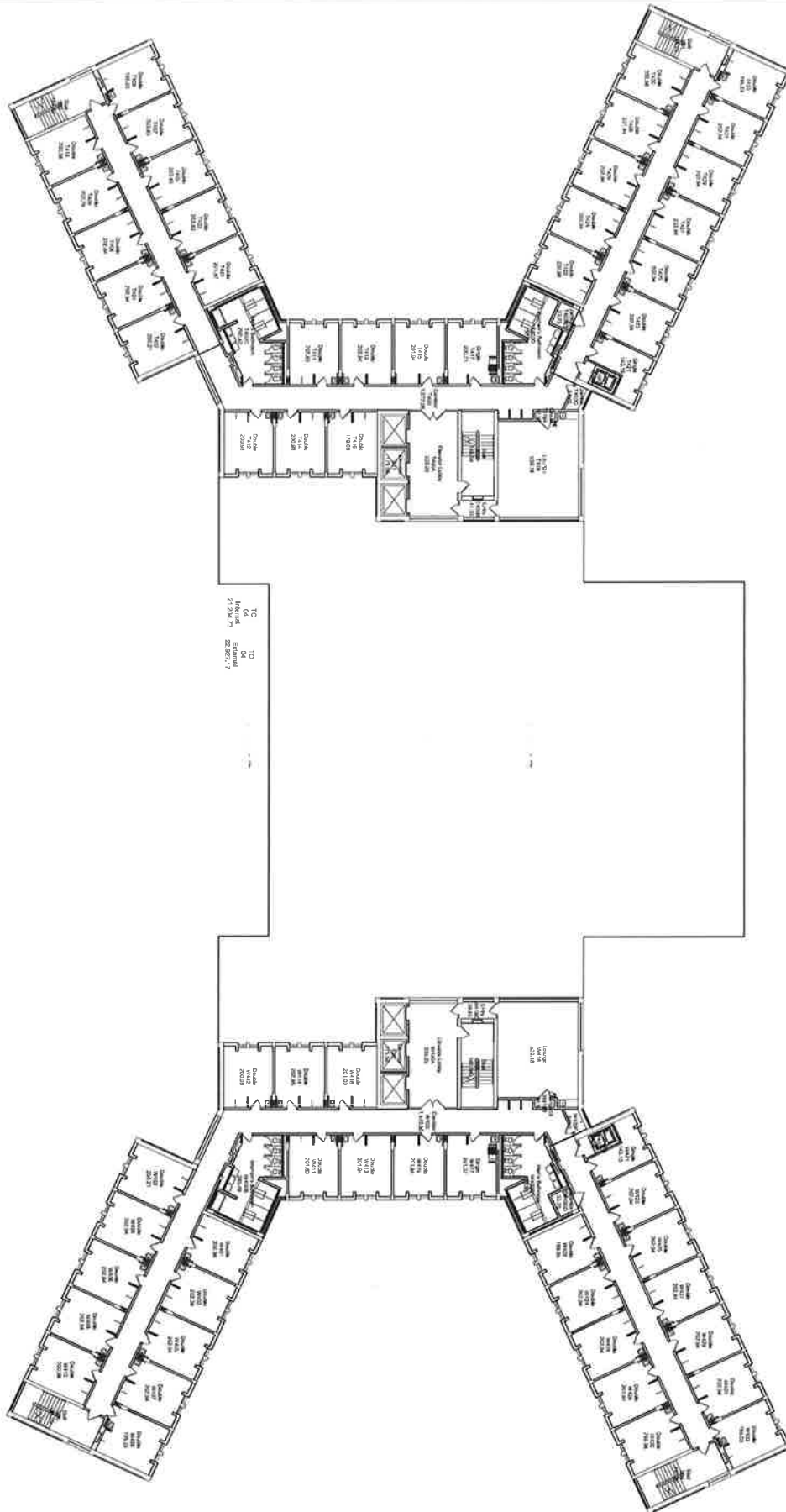


## Room by Department

Campus Planning

Revised	October 16, 2021
Scale	Not to Scale
Drawn	XX
Approved	XX
Dwg. No.	XXX





TO  
04  
Building  
2-20-21  
22-02-21

# TRAVERS & WOLFE HALL FOURTH FLOOR

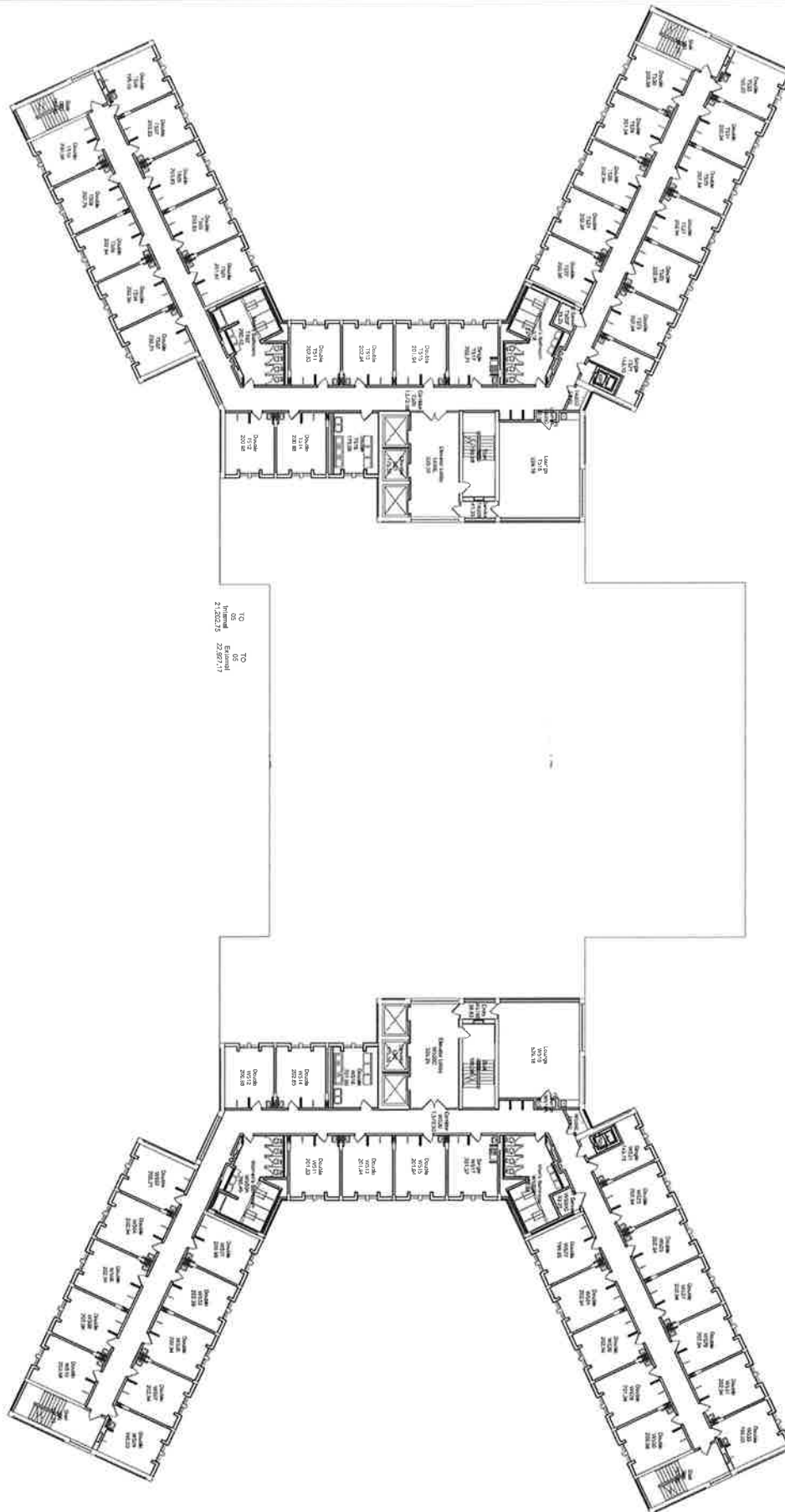


## Room by Department

Campus Planning

Revised	November 22, 2021
Scale	Not to Scale
Drawn	XX
Approved	XX
Dwg. No.	XXX





# TRAVERS & WOLFE HALL FIFTH FLOOR

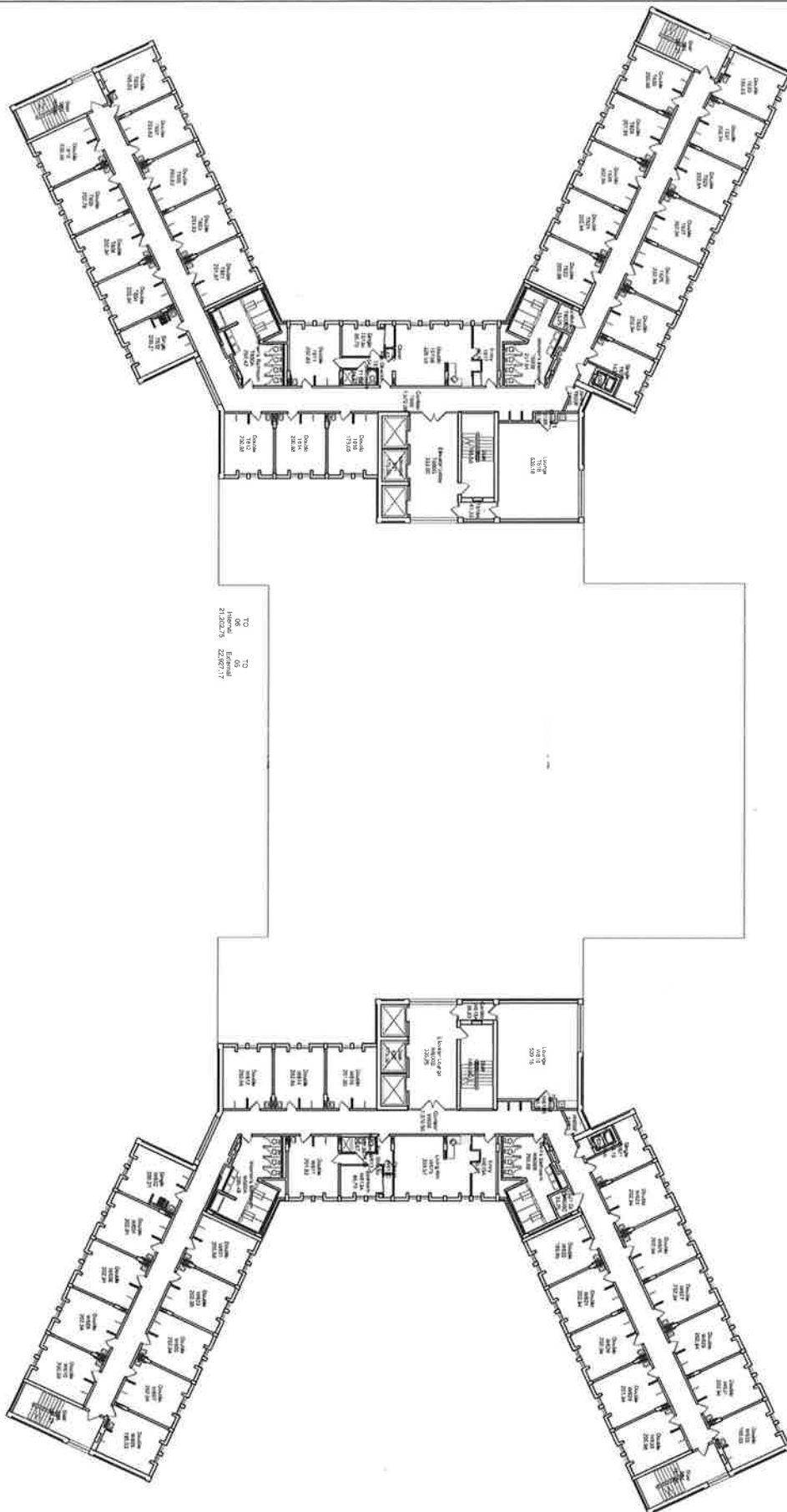


## Room by Department

Campus Planning

Revised	November 22, 2021
Scale	Not to Scale
Drawn	XX
Approved	XX
Dwg. No.	XXX





TO  
66  
10/14/20  
21/2023/5  
22/06/21/7

# TRAVERS & WOLFE HALL SIXTH FLOOR



## Room by Department

Campus Planning

Revised	November 22, 2021
Scale	Not to Scale
Drawn	XX
Approved	XX
Dwg. No.	XXX

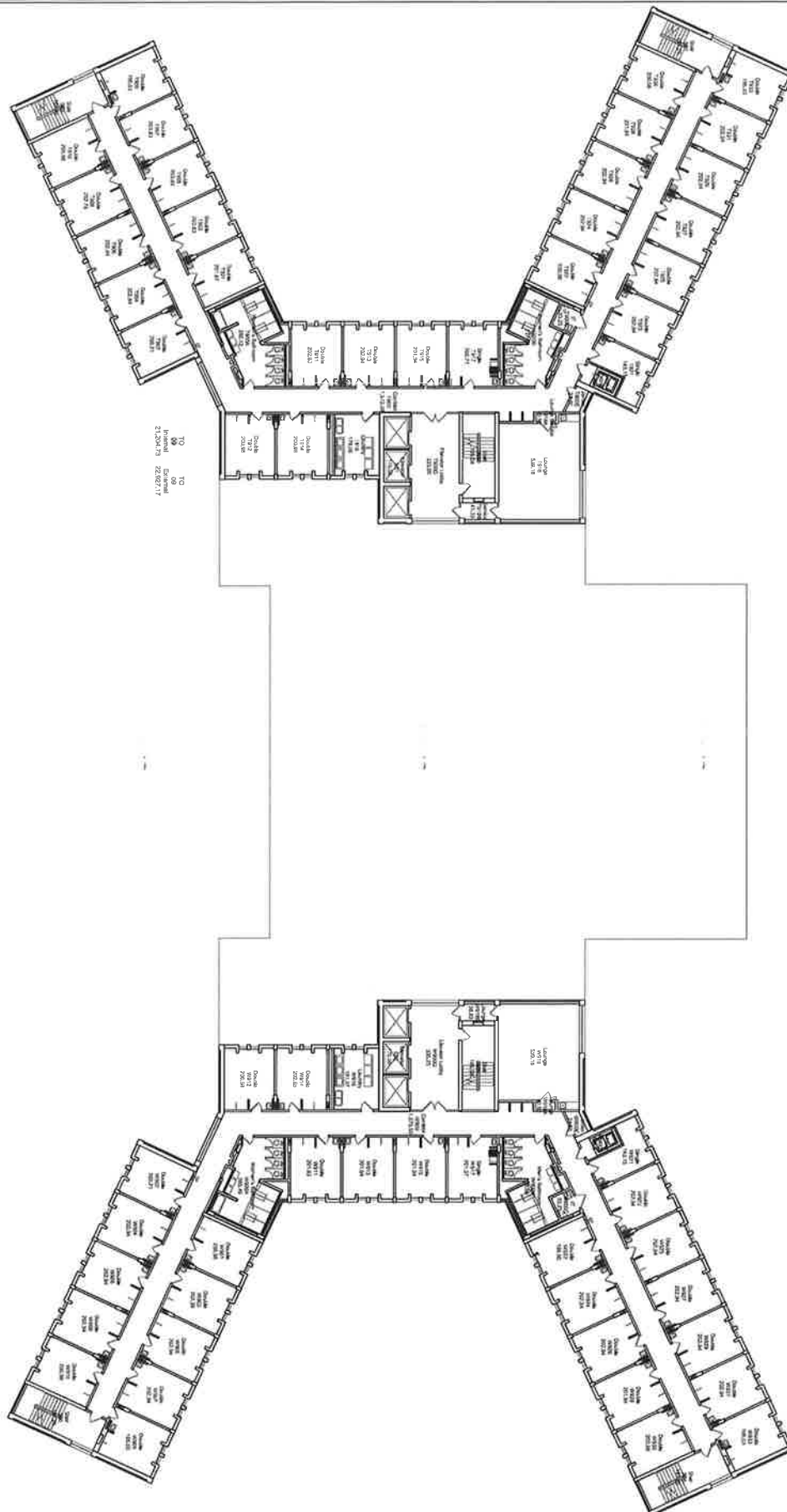






Dwg. No. XXX





# TRAVERS & WOLFE HALL NINTH FLOOR

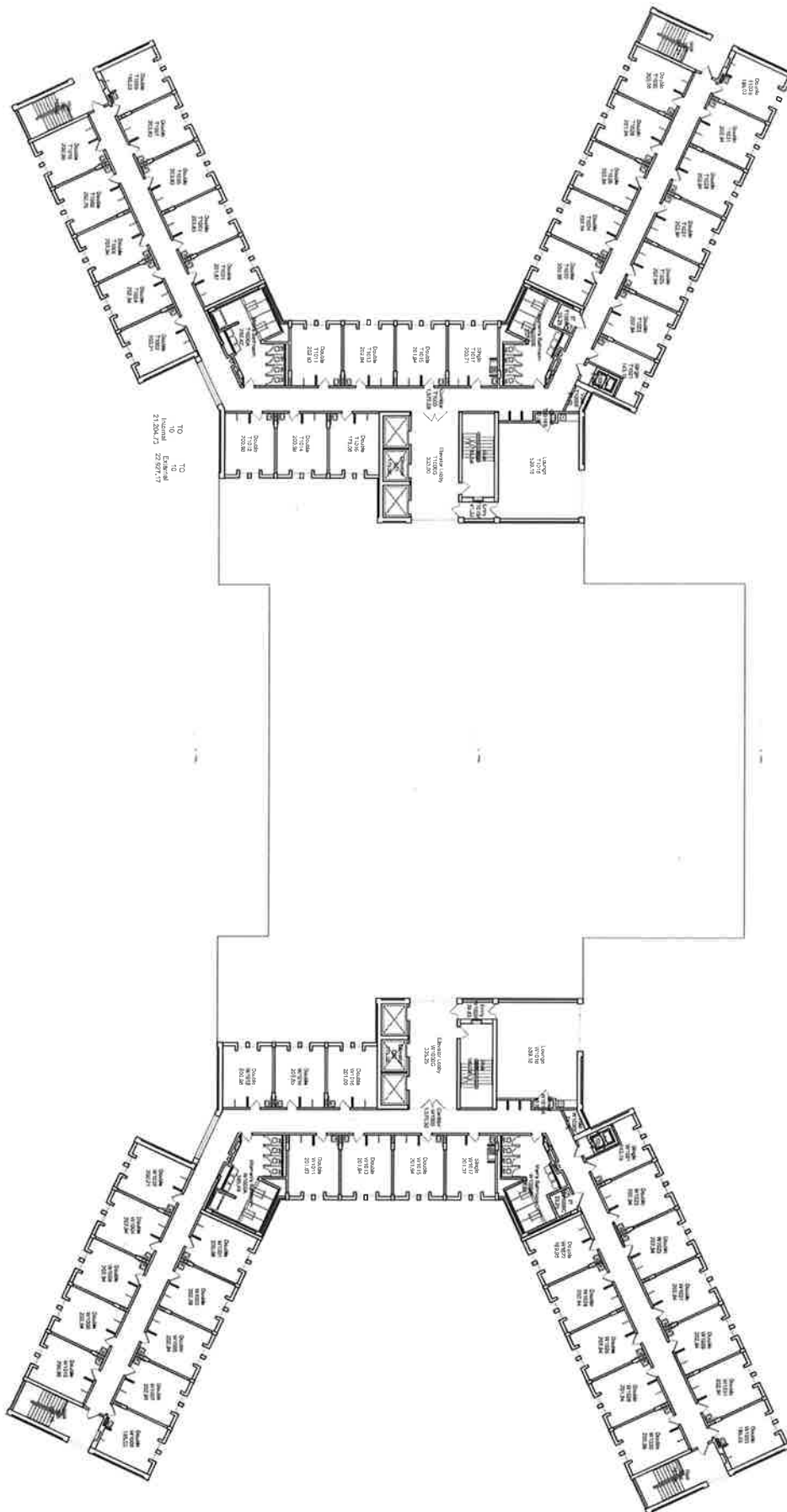


## Room by Department

Campus Planning

Revised	November 28, 2021
Scale	Not to Scale
Drawn	XX
Approved	XX
Dwg. No.	XXX





# TRAVERS & WOLFE HALL TENTH FLOOR



## Room by Department

Campus Planning

Revised	November 28, 2021
Scale	Not to Scale
Drawn	XX
Approved	XX
Dwg. No.	XXX